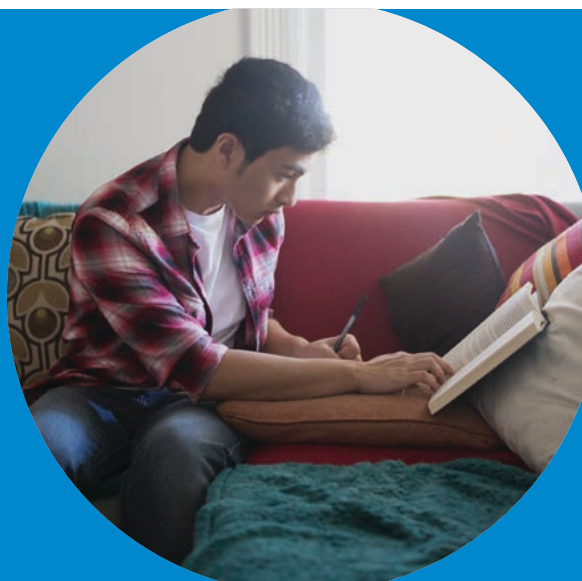


College Board Opportunity Scholarships

Organize a Practice Test



Getting better takes practice. Besides encouraging your classmates to use Official SAT[®] Practice, simulate the test day experience by organizing a practice SAT test at your school. Official SAT Practice offers both online and paper and pencil practice tests. Based on your practice test results, Khan Academy[®] will update all of your personalized practice to focus you on the most important areas as test day approaches.

Before you get started:

- Ask a teacher or administrator at your school to organize the date, time, and location, and to identify proctors.
- Brainstorm how you'll promote the practice test and recruit students. What incentives could you offer?
- Remember to also practice on Official SAT Practice as you get ready to take the practice test, and then reflect on the experience as a team.

SAT TEST TIMING

Component	Time Allotted (minutes)	Number of Questions/Tasks
Reading	65	52
Writing and Language	35	44
Essay (Optional)	50	1
Math	80	58
Total	180 (230 with Essay)	154 (155 with Essay)

Option A: Online Practice Tests

- Reserve laptops or the school computer lab, and direct students to [Official SAT Practice on Khan Academy](#).
- Provide scrap paper and pencils for math problems.
- Review with students how to answer grid-in questions in the math section. (See page 3 for reference.)
- Provide the [approved calculator list](#).
- Set aside about 4 hours to take the exam.
- Optional:
 - ♦ Ask a teacher to help set aside time to review results, offer explanations, and reflect on the experience by using the questions at the end of this document.

Option B: Paper and Pencil Practice Tests

- Reserve a quiet space such as a library or classroom.
- Download [official SAT practice tests and answer sheets](#).
 - ♦ If you want to practice for the PSAT/NMSQT® or the PSAT™ 10, [download official practice tests and answer sheets](#) for those assessments.
- Provide #2 pencils.
- Provide the [approved calculator list](#).
- Set aside about 4 hours to take the exam.
- Encourage students to download the [Scan and Score App](#) to get results as soon as you finish the test. These results will update your Official SAT Practice profiles so that practice recommendations reflect this practice and progress.
- Optional:
 - ♦ Ask a teacher to help set aside time to review results and answer explanations and reflect on the experience by using the questions below.

Reflecting on Practice:

- Work with your teacher to lead a discussion about the experience. (Start the conversation by sharing your own reflections.):
 - ♦ Did everyone have enough time to finish all the sections? What are some timing strategies?
 - ♦ Did anyone get distracted during the test? What strategies did you use to stay focused?
 - ♦ Did anyone feel hungry? Nervous? Sleepy? What should you do to prevent this?

Other Ideas for Practice Test Day

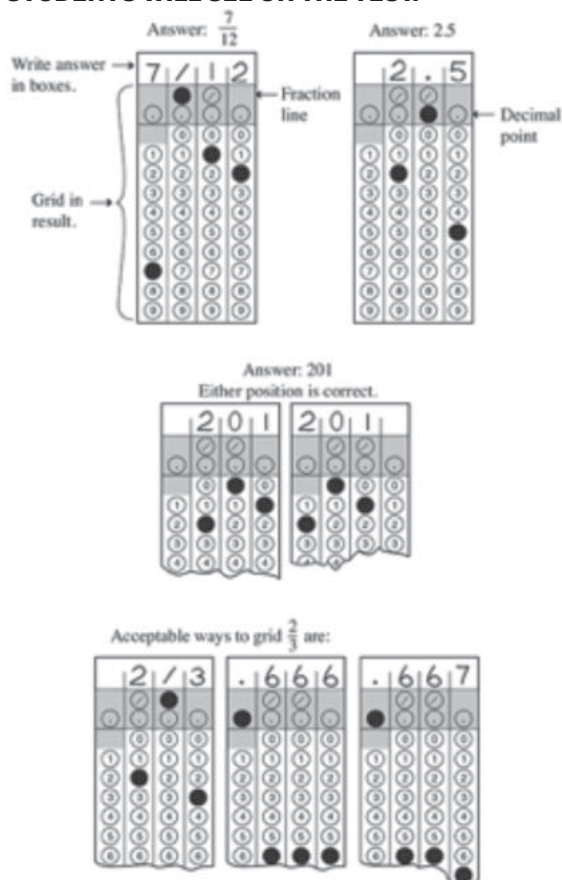
- Review some information:
 - ♦ [This list](#) of dos and don'ts for test day.
 - ♦ [What to expect](#) on test day.
- Remind your classmates to be ready for test day by:
 - ♦ Eating a good dinner.
 - ♦ Getting a good night's sleep.
 - ♦ Eating a healthy breakfast.

To get more information, visit collegeboard.org/ambassadors.

Gridding In Answers

- Mark no more than one circle in any column.
- Only answers indicated by filling in the circle will be scored. (You won't receive credit for anything written in the boxes located above the circles.)
- It doesn't matter in which column you begin entering their answers; as long as the responses are recorded within the grid area, you'll receive credit.
- The grid can hold only 4 decimal places and can only accommodate positive numbers and zero.
- Unless a problem indicates otherwise, answers can be entered on the grid as a decimal or a fraction.
- Fractions like $\frac{3}{24}$ don't need to be reduced to their lowest terms.
- All mixed numbers need to be converted to improper fractions before being recorded in the grid.
- If the answer is a repeating decimal, students must record the most accurate value the grid will accommodate.

BELOW IS A SAMPLE OF THE INSTRUCTIONS STUDENTS WILL SEE ON THE TEST.



Bonus Tip: When using Official SAT Practice on Khan Academy® for practice tests, all practice counts toward the student hours and problems practiced on the platform.