



# Fall 2011 SOAS

Summary of Answers and Skills Report

Eighth-Graders, Class of 2016

**SAMPLE SCHOOL (00000)**

ReadiStep results for your students are enclosed. Use this information to adjust curricula and instructional practice to improve student learning.

Find more information about interpreting ReadiStep results online at:

**[readistep.collegeboard.org](http://readistep.collegeboard.org)**

# Performance Overview

This report details the performance of 752 students from the 8th grade. This page provides an overview of your students' performance on ReadiStep, allowing you to make general comparisons of your student population with the state and nation. The remainder of the report will assist you in analyzing your students' performance in much greater detail - use it to identify gaps in your local curriculum or to adapt instruction.

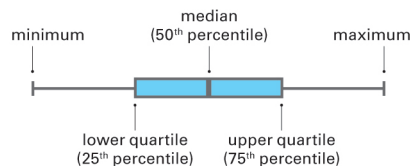
For each section of the test (critical reading, mathematics and writing skills), you will find the following:

- **Skill Analysis:** A summary of your students' performance on the college readiness skills tested on ReadiStep.
- **Question Analysis:** A detailed analysis of your students' responses to each ReadiStep question.
- **Comparable Group Analysis:** A statistical comparison highlighting anomalies in your students' performance on each ReadiStep question.

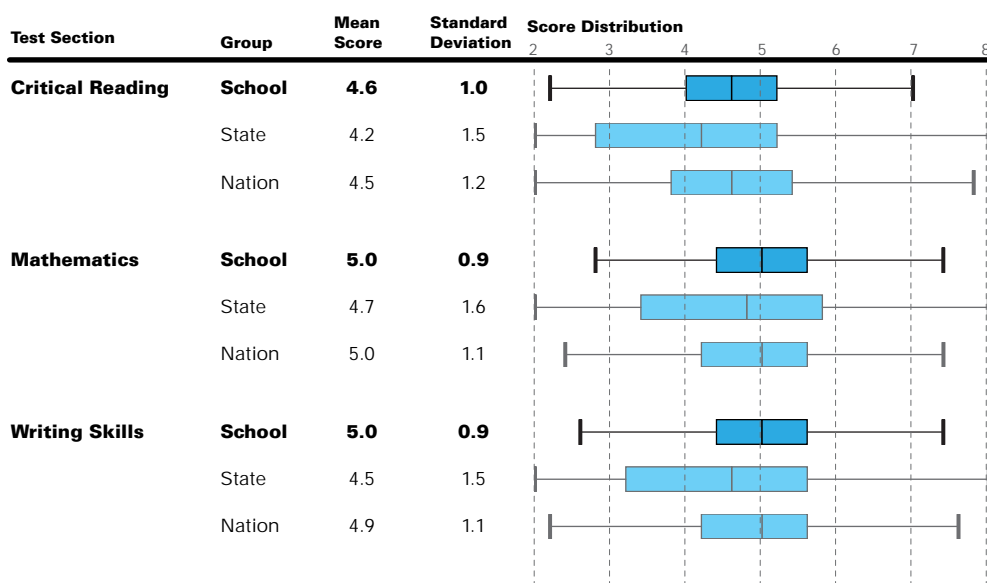
**752**  
**8th GRADE STUDENTS**

## Score Distribution

The "boxplots" to the right show the distribution of test scores for your students, as well as for the state and nation. When interpreting these results, focus on typical scores (means and medians), variability in scores (standard deviations and lengths of boxes), and shapes of distributions (position of boxes relative to the median). Plots that have boxes that are off-center reveal that a greater proportion of students are high-scoring (the box to the right) or low-scoring (box appears to the left).



Note: The minimum and maximum exclude outliers.



When interpreting results throughout this report, please note that State data is based on 1,910 participating students and Nation data is based on 129,082 participating students. Student participation in ReadiStep is concentrated in certain geographical areas and may not be representative of the full student population in your state and the nation.

# Critical Reading Skill Analysis

The left column indicates how many questions your students answered correctly. The right column shows your students' performance on each question by skill category. For more information about using Readistep results, visit [readistep.collegeboard.org](http://readistep.collegeboard.org).

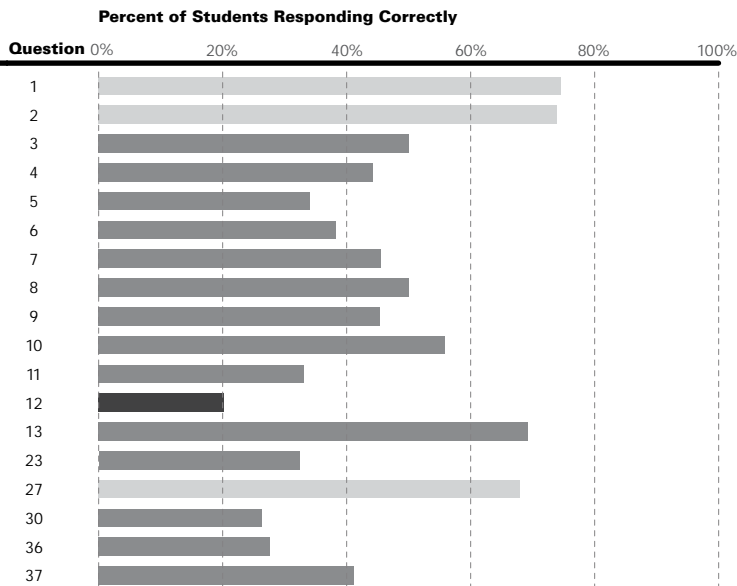
**Group**  
 x School  
 G State  
 F Nation

**Difficulty**  
 Easy  
 Medium  
 Hard

## Determining the Meaning of Words

Use vocabulary skills, context, roots, prefixes, and suffixes to determine the meaning of words.

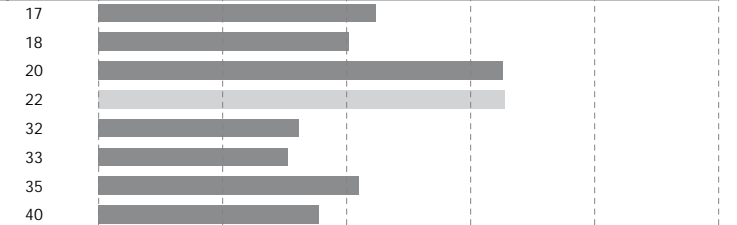
8.3 of 18 questions correct



## Author's Craft

Understand how authors use tone, style and writing devices such as metaphor or symbolism.

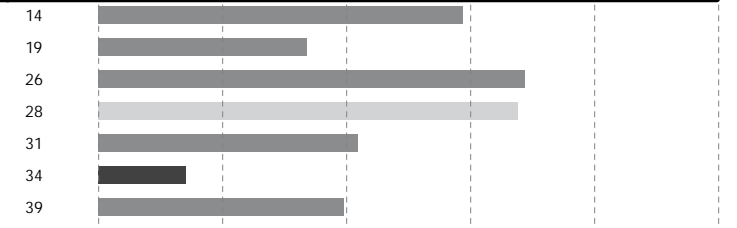
3.6 of 8 questions correct



## Reasoning and Inferencing

Understand assumptions, suggestions and implications in reading passages and draw informed conclusions.

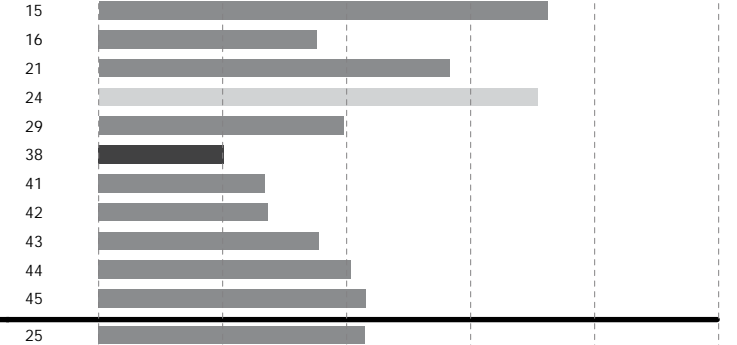
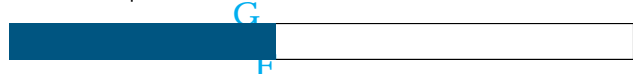
3.2 of 7 questions correct



## Organization and Ideas

Understand the organization of a reading passage, and identify the main and supporting ideas.

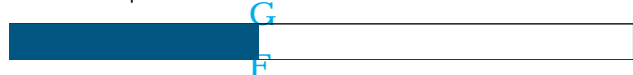
4.7 of 11 questions correct



## Understanding Literary Elements

Understand literary elements such as plot, setting and characterization.

0.4 of 1 questions correct



# Critical Reading Question Analysis

This section shows the distribution of correct and incorrect answers for your students, state and nation. Take the next step: Review questions and answer options in the test book, and then develop instructional remediation plans.

Question	Difficulty Group	Answer Data (% and correct answer in bold)					Answer Distribution							
		A	B	C	D	omitted	Correct Answer	20%	40%	60%	80%			
Critical Reading	1 E	School	<b>75</b>	1	10	14	0	A				C	D	
		State	<b>72</b>	2	11	15	0							
		Nation	<b>73</b>	2	11	14	0							
	2 E	School	13	<b>74</b>	5	9	0	B				A	C	D
		State	13	<b>72</b>	7	7	1							
		Nation	12	<b>75</b>	6	7	1							
	3 M	School	15	<b>50</b>	16	18	1	B		A		C	D	
		State	14	<b>51</b>	17	17	1							
		Nation	13	<b>59</b>	13	14	1							
	4 M	School	<b>44</b>	7	31	18	1	A		B		C	D	
		State	<b>48</b>	7	25	18	2							
		Nation	<b>46</b>	6	28	19	1							
	5 M	School	8	<b>34</b>	36	20	2	B		A		C	D	
		State	9	<b>39</b>	32	18	2							
		Nation	10	<b>38</b>	32	17	2							
	6 M	School	<b>38</b>	31	15	14	1	A		B		C	D	
		State	<b>41</b>	29	14	14	2							
		Nation	<b>44</b>	28	15	11	1							
	7 M	School	15	37	<b>46</b>	2	0	C			A	B	D	
		State	14	40	<b>43</b>	3	1							
		Nation	13	39	<b>45</b>	2	0							
	8 M	School	24	4	21	<b>50</b>	0	D		A		B	C	
		State	22	6	20	<b>51</b>	2							
		Nation	26	6	18	<b>49</b>	1							
9 M	School	4	25	25	<b>45</b>	0	D		A	B		C		
	State	4	24	22	<b>48</b>	2								
	Nation	4	24	23	<b>47</b>	1								
10 M	School	9	<b>56</b>	14	20	0	B			A		C	D	
	State	8	<b>54</b>	15	21	2								
	Nation	8	<b>55</b>	15	20	1								
11 M	School	7	32	<b>33</b>	28	0	C		A	B		D		
	State	8	28	<b>36</b>	25	2								
	Nation	9	28	<b>33</b>	28	1								
12 H	School	24	<b>20</b>	47	7	1	B		A		C	D		
	State	22	<b>23</b>	42	9	4								
	Nation	23	<b>19</b>	47	9	2								
13 M	School	15	<b>69</b>	1	14	1	B			A		D		
	State	12	<b>71</b>	2	11	4								
	Nation	12	<b>73</b>	2	12	1								
14 M	School	9	12	19	<b>59</b>	1	D		A	B		C		
	State	9	11	16	<b>58</b>	6								
	Nation	10	12	16	<b>60</b>	2								
15 M	School	10	<b>72</b>	3	14	1	B			A		C	D	
	State	10	<b>67</b>	4	12	7								
	Nation	10	<b>70</b>	5	14	2								
16 M	School	46	10	8	<b>35</b>	1	D		A		B	C		
	State	38	9	9	<b>36</b>	8								
	Nation	44	11	8	<b>35</b>	2								
17 M	School	32	4	<b>45</b>	19	1	C		A		B	D		
	State	28	6	<b>41</b>	17	9								
	Nation	29	7	<b>41</b>	20	2								
18 M	School	<b>40</b>	15	23	20	1	A		B		C	D		
	State	<b>40</b>	12	20	18	11								
	Nation	<b>43</b>	15	19	21	3								
19 M	School	26	23	16	<b>34</b>	2	D		A		B	C		
	State	20	17	14	<b>35</b>	13								
	Nation	24	19	17	<b>37</b>	3								
20 M	School	<b>65</b>	17	12	5	1	A			B		C	D	
	State	<b>58</b>	13	10	6	13								
	Nation	<b>65</b>	14	10	7	3								
21 M	School	29	<b>57</b>	10	4	1	B			A		C	D	
	State	22	<b>52</b>	8	4	15								
	Nation	24	<b>59</b>	10	4	3								
22 E	School	16	<b>65</b>	13	2	3	B			A		C	D	
	State	13	<b>54</b>	10	2	22								
	Nation	18	<b>62</b>	12	2	7								
23 M	School	59	3	<b>32</b>	3	3	C		A			B	D	
	State	40	3	<b>32</b>	3	23								
	Nation	51	3	<b>35</b>	3	7								
24 E	School	4	18	3	<b>71</b>	3	D				A	B	C	
	State	4	12	3	<b>57</b>	24								
	Nation	5	16	3	<b>68</b>	8								

# Critical Reading Question Analysis

Question	Difficulty	Group	Answer Data (% and correct answer in bold)					Answer Distribution				
			A	B	C	D	omitted	Correct Answer	20%	40%	60%	80%
Critical Reading	25	M School	6	12	<b>43</b>	34	4	C	A	B	D	omitted
			5	7	<b>36</b>	25	26					
			6	10	<b>44</b>	30	9					
	26	M School	<b>69</b>	7	9	10	5	A	B	C	D	omitted
			<b>53</b>	6	6	7	28					
			<b>62</b>	8	9	11	11					
	27	E School	17	<b>68</b>	7	2	5	B	A	C	D	omitted
			11	<b>53</b>	5	2	29					
			14	<b>66</b>	7	2	11					
	28	E School	3	<b>68</b>	4	18	7	B	A	C	D	omitted
			3	<b>53</b>	3	11	31					
			3	<b>66</b>	5	14	12					
	29	M School	22	22	9	<b>39</b>	8	D	A	B	C	omitted
			15	14	6	<b>34</b>	32					
			19	21	8	<b>39</b>	13					
	30	M School	13	9	43	<b>26</b>	9	D	A	B	C	omitted
			10	6	28	<b>23</b>	34					
			12	7	39	<b>27</b>	15					
	31	M School	27	14	<b>42</b>	6	11	C	A	B	D	omitted
			14	9	<b>36</b>	4	36					
22			14	<b>40</b>	6	18						
32	M School	16	28	9	<b>32</b>	15	D	A	B	C	omitted	
		10	16	6	<b>29</b>	39						
		18	21	8	<b>31</b>	21						
33	M School	18	13	<b>31</b>	21	17	C	A	B	D	omitted	
		10	7	<b>27</b>	14	41						
		15	11	<b>32</b>	20	23						
34	H School	41	<b>14</b>	15	12	18	B	A	C	D	omitted	
		26	<b>16</b>	9	7	43						
		35	<b>18</b>	11	11	25						
35	M School	19	8	<b>42</b>	11	20	C	A	B	D	omitted	
		13	5	<b>32</b>	6	43						
		21	8	<b>37</b>	8	26						
36	M School	<b>28</b>	7	19	18	27	A	B	C	D	omitted	
		<b>26</b>	5	11	10	48						
		<b>32</b>	6	18	12	32						
37	M School	15	9	<b>41</b>	6	28	C	A	B	D	omitted	
		9	5	<b>33</b>	4	49						
		12	9	<b>40</b>	5	34						
38	H School	<b>20</b>	20	18	10	32	A	B	C	D	omitted	
		<b>21</b>	13	9	6	51						
		<b>23</b>	18	14	8	37						
39	M School	11	11	5	<b>40</b>	33	D	A	B	C	omitted	
		7	6	3	<b>32</b>	52						
		10	11	5	<b>36</b>	39						
40	M School	<b>36</b>	13	4	12	35	A	B	C	D	omitted	
		<b>29</b>	7	3	8	53						
		<b>32</b>	11	6	10	41						
41	M School	5	<b>27</b>	23	8	36	B	A	C	D	omitted	
		3	<b>24</b>	14	5	54						
		4	<b>27</b>	20	7	42						
42	M School	14	15	<b>27</b>	6	37	C	A	B	D	omitted	
		9	9	<b>24</b>	3	55						
		12	13	<b>28</b>	5	43						
43	M School	<b>36</b>	14	8	5	38	A	B	C	D	omitted	
		<b>29</b>	8	4	2	56						
		<b>34</b>	12	7	4	44						
44	M School	<b>41</b>	15	3	3	38	A	B	C	D	omitted	
		<b>31</b>	9	2	2	56						
		<b>35</b>	13	4	4	44						
45	M School	<b>43</b>	3	7	7	39	A	B	C	D	omitted	
		<b>33</b>	2	4	4	56						
		<b>39</b>	4	7	6	45						

# Critical Reading Comparable Group Analysis

## What is a comparable group?

A comparable group is a statistically generated group that allows you to identify questions where your students' performance diverges from what might be expected based on their overall performance. It is a sample of students whose overall performance was similar to the performance of your student population. This group is compiled based on performance only, and does not account for attributes like student demographics, geographic region or school size.

## How is this information useful?

Focusing on questions where your students' performance is significantly lower than the comparable group performance can reveal opportunities where you might realistically expect to improve student learning. Similarly, when your students' performance is significantly higher than the comparable group performance, you can identify strengths in your curriculum and instruction, and work to ensure that those strengths are recognized and maintained.

Question	Difficulty	School (% correct)	Comp Group (% correct)	Difference between School and Comparable Group					
				-10%	-5%	0%	+5%	+10%	
1	E	<b>75</b>	73					}	
2	E	<b>74</b>	75					}	
3	M	<b>50</b>	58	}					
4	M	<b>44</b>	46					}	
5	M	<b>34</b>	38			}			
6	M	<b>38</b>	44		}				
7	M	<b>46</b>	45					}	
8	M	<b>50</b>	47					}	
9	M	<b>45</b>	46			}			
10	M	<b>56</b>	55			}			
11	M	<b>33</b>	33			}			
12	H	<b>20</b>	18			}			
13	M	<b>69</b>	74		}				
14	M	<b>59</b>	60		}				
15	M	<b>72</b>	70			}			
16	M	<b>35</b>	34			}			
17	M	<b>45</b>	40					}	
18	M	<b>40</b>	43		}				
19	M	<b>34</b>	37		}				
20	M	<b>65</b>	67		}				
21	M	<b>57</b>	61		}				
22	E	<b>65</b>	64		}				
23	M	<b>32</b>	33		}				

Question	Difficulty	School (% correct)	Comp Group (% correct)	Difference between School and Comparable Group					
				-10%	-5%	0%	+5%	+10%	
24	E	<b>71</b>	70					}	
25	M	<b>43</b>	44				}		
26	M	<b>69</b>	63					}	
27	E	<b>68</b>	69				}		
28	E	<b>68</b>	68			}			
29	M	<b>39</b>	39			}			
30	M	<b>26</b>	27			}			
31	M	<b>42</b>	41			}			
32	M	<b>32</b>	30			}			
33	M	<b>31</b>	32			}			
34	H	<b>14</b>	17		}				
35	M	<b>42</b>	39			}			
36	M	<b>28</b>	31		}				
37	M	<b>41</b>	41			}			
38	H	<b>20</b>	21		}				
39	M	<b>40</b>	35					}	
40	M	<b>36</b>	32					}	
41	M	<b>27</b>	27		}				
42	M	<b>27</b>	28		}		}		
43	M	<b>36</b>	33					}	
44	M	<b>41</b>	36					}	
45	M	<b>43</b>	38					}	

Your students performed **significantly worse** on questions that fall in the dark blue column to the left, and **significantly better** on questions that fall in the light blue column to the right.

# Mathematics Skill Analysis

The left column indicates how many questions your students answered correctly. The right column shows your students' performance on each question by skill category. For more information about using ReadiStep results, visit [readistep.collegeboard.org](http://readistep.collegeboard.org).

**Group**

x School  
G State  
F Nation

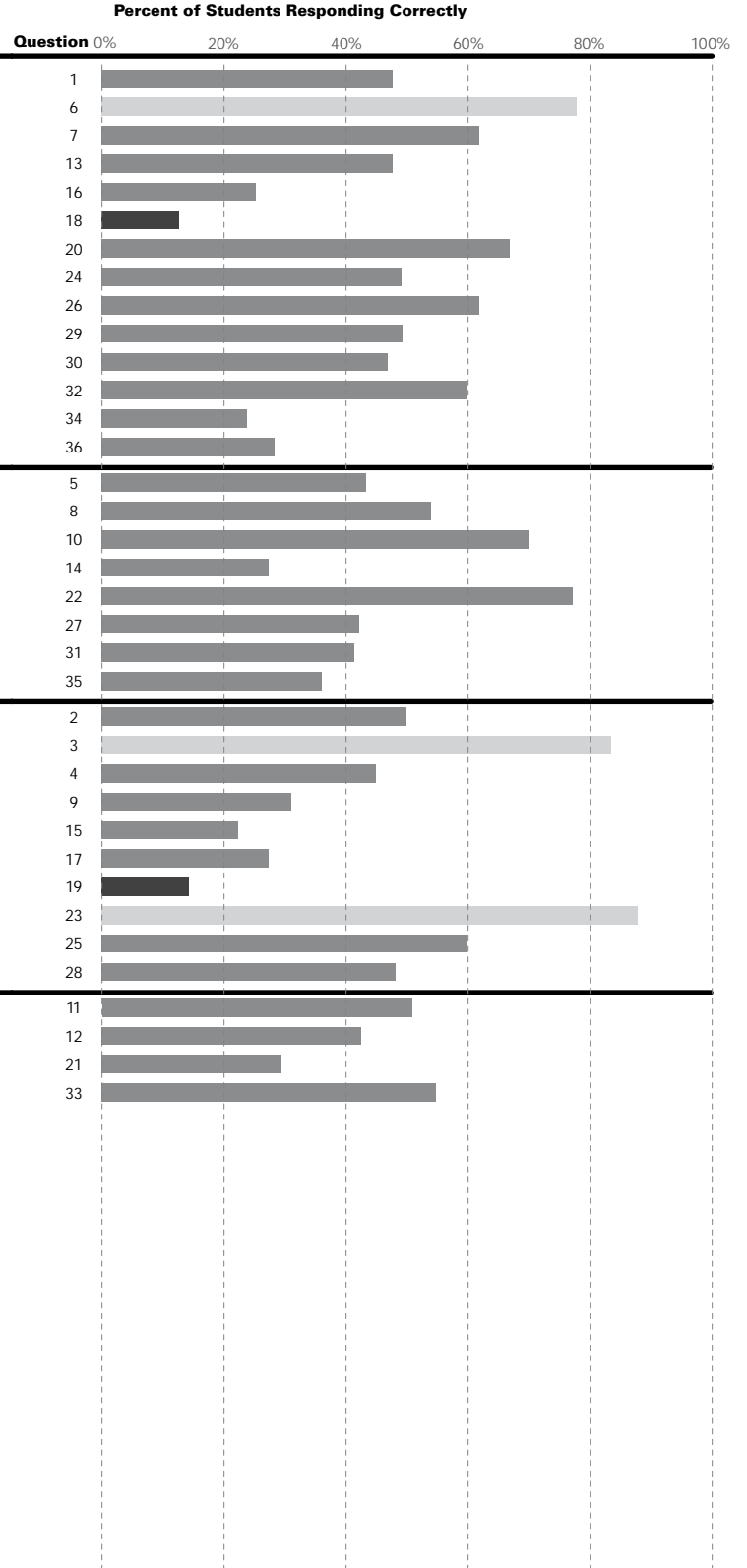
**Difficulty**

■ Easy  
■ Medium  
■ Hard

## Number and Operations

Understand types of numbers (integers, fractions, decimals), their properties, and the correct order of operations (multiplication, division, addition).

6.6 of 14 questions correct



## Algebra and Functions

Solve problems using algebraic expressions and symbols to represent relationships, patterns, and functions of different types.

3.9 of 8 questions correct



## Geometry and Measurement

Solve problems based on understanding the properties of shapes, such as triangles and circles, and the spatial relationships between angles and lines.

4.7 of 10 questions correct



## Data, Statistics, and Probability

Analyze data, understand descriptive statistics, make inferences and determine the likelihood that certain events will occur.

1.8 of 4 questions correct



# Mathematics Skill Analysis

The left column indicates how many questions your students answered correctly. The right column shows your students' performance on each question by skill category. For more information about using Readistep results, visit [readistep.collegeboard.org](http://readistep.collegeboard.org).

Group		Difficulty	
x	School	■	Easy
G	State	■	Medium
F	Nation	■	Hard

## Problem Solving

Solve abstract and practical problems, applying and adapting a variety of strategies. Monitor progress and evaluate answers in terms of questions asked.

4.8 of 10 questions correct



## Representation

Use and translate among representations including verbal, numerical, symbolic, and graphical to communicate mathematical ideas and solve problems.

5.1 of 11 questions correct



## Reasoning

Develop and use mathematical arguments and proofs to explore the truth of conjectures and justify conclusions.

1.8 of 4 questions correct



## Connections

Connect ideas from different areas of mathematics (particularly geometry and algebra) to state or solve abstract or applied problems.

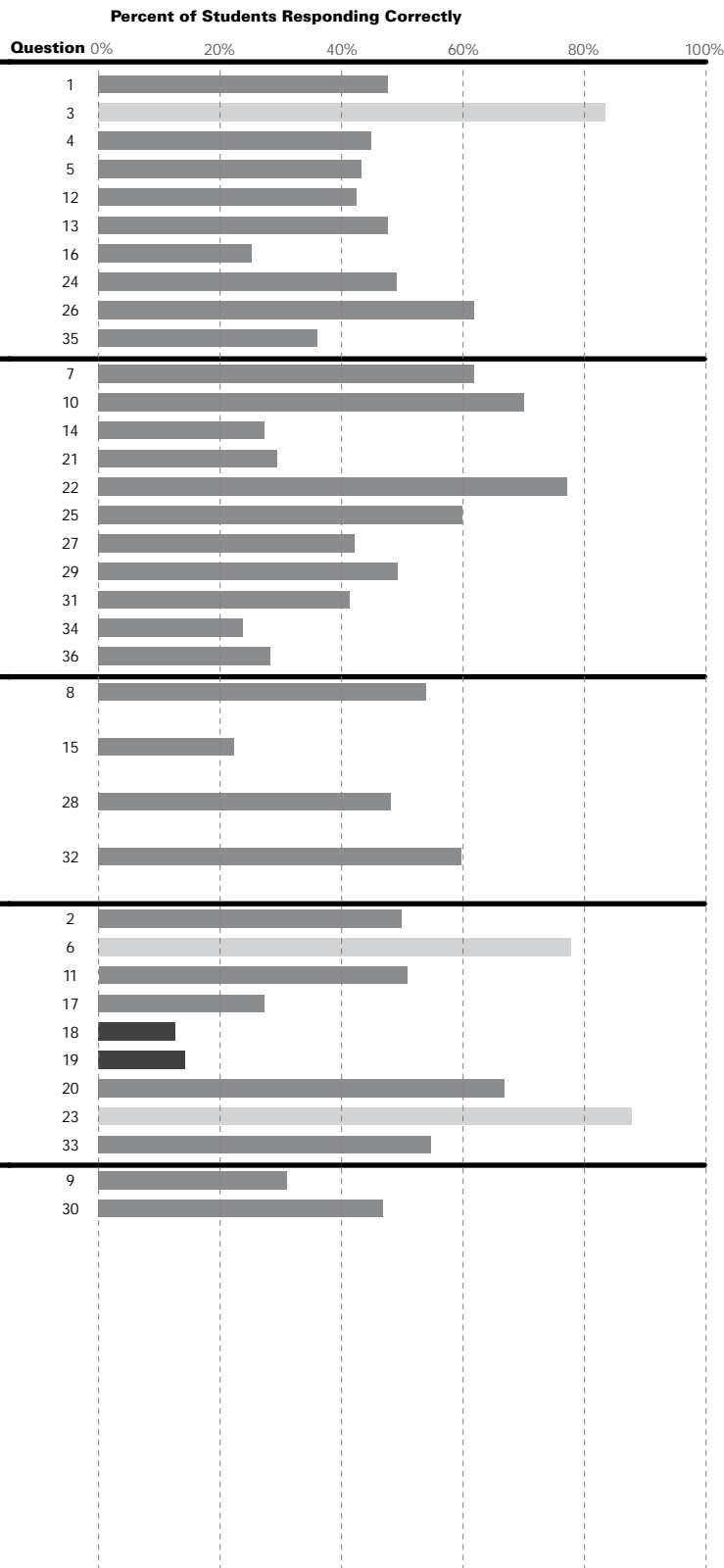
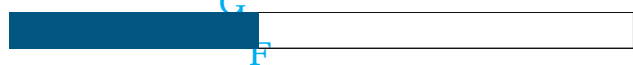
4.4 of 9 questions correct



## Communication

Express mathematical ideas precisely and communicate them coherently and clearly in the language and notation of mathematics.

0.8 of 2 questions correct





# Mathematics Question Analysis

This section shows the distribution of correct and incorrect answers for your students, state and nation. Take the next step: Review questions and answer options in the test book, and then develop instructional remediation plans.

Question	Difficulty	Group	Answer Data (% and correct answer in bold)					Answer Distribution								
			A	B	C	D	omitted	Correct Answer	20%	40%	60%	80%				
Mathematics - Calculator	1	M School	29	<b>48</b>	19	2	3	B	A	C	D	Correct Answer	20%	40%	60%	80%
		State	24	<b>53</b>	17	2	3									
		Nation	25	<b>53</b>	17	2	2									
	2	M School	23	26	<b>50</b>	1	1	C	A	B	D	Correct Answer	20%	40%	60%	80%
		State	20	24	<b>52</b>	1	3									
		Nation	20	20	<b>57</b>	2	1									
	3	E School	<b>83</b>	9	3	3	1	A	B	C	D	Correct Answer	20%	40%	60%	80%
		State	<b>79</b>	8	5	3	5									
		Nation	<b>82</b>	8	5	3	1									
	4	M School	15	13	<b>45</b>	26	2	C	A	B	D	Correct Answer	20%	40%	60%	80%
		State	12	9	<b>50</b>	23	6									
		Nation	12	11	<b>51</b>	23	2									
	5	M School	14	<b>43</b>	15	24	3	B	A	C	D	Correct Answer	20%	40%	60%	80%
		State	11	<b>48</b>	12	19	10									
		Nation	13	<b>48</b>	13	21	4									
	6	E School	7	<b>78</b>	7	7	1	B	A	C	D	Correct Answer	20%	40%	60%	80%
		State	6	<b>73</b>	6	5	11									
		Nation	9	<b>78</b>	6	5	3									
7	M School	14	10	13	<b>62</b>	2	D	A	B	C	Correct Answer	20%	40%	60%	80%	
	State	11	10	11	<b>53</b>	14										
	Nation	15	17	16	<b>48</b>	4										
8	M School	21	<b>54</b>	15	6	4	B	A	C	D	Correct Answer	20%	40%	60%	80%	
	State	17	<b>49</b>	11	5	17										
	Nation	21	<b>49</b>	15	8	7										
9	M School	<b>31</b>	46	11	6	6	A	B	C	D	Correct Answer	20%	40%	60%	80%	
	State	<b>30</b>	36	8	5	20										
	Nation	<b>30</b>	46	10	5	9										
10	M School	10	<b>70</b>	10	5	5	B	A	C	D	Correct Answer	20%	40%	60%	80%	
	State	6	<b>62</b>	8	4	20										
	Nation	9	<b>66</b>	11	5	9										
11	M School	<b>51</b>	15	22	5	7	A	B	C	D	Correct Answer	20%	40%	60%	80%	
	State	<b>47</b>	10	15	4	24										
	Nation	<b>50</b>	12	19	5	12										
12	M School	11	20	15	<b>43</b>	11	D	A	B	C	Correct Answer	20%	40%	60%	80%	
	State	7	14	11	<b>41</b>	27										
	Nation	11	17	15	<b>42</b>	16										
13	M School	15	9	<b>48</b>	15	14	C	A	B	D	Correct Answer	20%	40%	60%	80%	
	State	10	6	<b>43</b>	10	31										
	Nation	16	10	<b>44</b>	12	19										
14	M School	15	20	20	<b>27</b>	18	D	A	B	C	Correct Answer	20%	40%	60%	80%	
	State	10	14	14	<b>29</b>	34										
	Nation	16	19	18	<b>25</b>	23										
15	M School	29	18	<b>22</b>	8	22	C	A	B	D	Correct Answer	20%	40%	60%	80%	
	State	18	13	<b>26</b>	6	37										
	Nation	23	18	<b>26</b>	7	26										
16	M School	17	17	<b>25</b>	13	28	C	A	B	D	Correct Answer	20%	40%	60%	80%	
	State	12	11	<b>26</b>	9	42										
	Nation	15	16	<b>26</b>	12	32										
17	M School	20	14	16	<b>27</b>	23	D	A	B	C	Correct Answer	20%	40%	60%	80%	
	State	13	9	12	<b>28</b>	38										
	Nation	17	11	18	<b>25</b>	30										
18	H School	7	15	<b>13</b>	36	29	C	A	B	D	Correct Answer	20%	40%	60%	80%	
	State	6	11	<b>17</b>	24	43										
	Nation	8	16	<b>14</b>	28	34										

# Mathematics Question Analysis

Question	Difficulty	Group	Answer Data (% and correct answer in bold)					Answer Distribution				
			A	B	C	D	omitted	Correct Answer	20%	40%	60%	80%
19	H	School	51	<b>14</b>	18	13	3	B	A	C	D	
		State	32	<b>19</b>	14	9	26					
		Nation	46	<b>18</b>	17	15	4					
20	M	School	14	10	8	<b>67</b>	2	D	A	B	C	
		State	9	7	6	<b>53</b>	25					
		Nation	14	11	9	<b>62</b>	3					
21	M	School	6	9	53	<b>29</b>	2	D	A	B	C	
		State	4	6	33	<b>30</b>	26					
		Nation	5	10	47	<b>34</b>	4					
22	M	School	<b>77</b>	11	7	4	1	A	B	C	D	
		State	<b>60</b>	7	5	3	25					
		Nation	<b>74</b>	10	8	5	3					
23	E	School	<b>88</b>	6	3	2	2	A	B	C	D	
		State	<b>66</b>	4	3	2	26					
		Nation	<b>84</b>	6	5	3	3					
24	M	School	16	18	15	<b>49</b>	2	D	A	B	C	
		State	10	12	9	<b>41</b>	27					
		Nation	14	19	15	<b>48</b>	4					
25	M	School	25	6	7	<b>60</b>	3	D	A	B	C	
		State	17	4	5	<b>48</b>	27					
		Nation	23	6	6	<b>60</b>	4					
26	M	School	3	<b>62</b>	3	30	2	B	A	C	D	
		State	2	<b>50</b>	3	19	27					
		Nation	3	<b>61</b>	4	28	4					
27	M	School	14	7	30	<b>42</b>	6	D	A	B	C	
		State	10	4	19	<b>36</b>	31					
		Nation	14	7	28	<b>42</b>	8					
28	M	School	23	<b>48</b>	20	4	5	B	A	C	D	
		State	14	<b>40</b>	13	3	30					
		Nation	22	<b>47</b>	19	5	7					
29	M	School	20	16	<b>49</b>	9	5	C	A	B	D	
		State	11	10	<b>42</b>	6	30					
		Nation	15	15	<b>54</b>	9	7					
30	M	School	18	<b>47</b>	19	8	8	B	A	C	D	
		State	12	<b>39</b>	12	5	32					
		Nation	17	<b>46</b>	17	9	11					
31	M	School	7	31	<b>41</b>	13	9	C	A	B	D	
		State	4	18	<b>36</b>	9	32					
		Nation	8	26	<b>39</b>	14	12					
32	M	School	9	8	<b>60</b>	12	11	C	A	B	D	
		State	7	5	<b>47</b>	7	34					
		Nation	8	8	<b>56</b>	12	15					
33	M	School	18	<b>55</b>	9	9	9	B	A	C	D	
		State	11	<b>46</b>	6	5	32					
		Nation	17	<b>55</b>	8	6	14					
34	M	School	22	<b>24</b>	23	19	12	B	A	C	D	
		State	14	<b>23</b>	16	12	35					
		Nation	21	<b>25</b>	20	16	18					
35	M	School	11	13	<b>36</b>	30	11	C	A	B	D	
		State	7	8	<b>34</b>	18	34					
		Nation	9	11	<b>36</b>	27	16					
36	M	School	12	<b>28</b>	11	37	12	B	A	C	D	
		State	10	<b>28</b>	7	22	34					
		Nation	12	<b>26</b>	12	33	17					

# Mathematics Comparable Group Analysis

## What is a comparable group?

A comparable group is a statistically generated group that allows you to identify questions where your students' performance diverges from what might be expected based on their overall performance. It is a sample of students whose overall performance was similar to the performance of your student population. This group is compiled based on performance only, and does not account for attributes like student demographics, geographic region or school size.

## How is this information useful?

Focusing on questions where your students' performance is significantly lower than the comparable group performance can reveal opportunities where you might realistically expect to improve student learning. Similarly, when your students' performance is significantly higher than the comparable group performance, you can identify strengths in your curriculum and instruction, and work to ensure that those strengths are recognized and maintained.

	Question	Difficulty	School (% correct)	Comp Group (% correct)	Difference between School and Comparable Group					
					-10%	-5%	0%	+5%	+10%	
Mathematics - Calculator	1	M	<b>48</b>	52			}			
	2	M	<b>50</b>	55			}			
	3	E	<b>83</b>	84			}			
	4	M	<b>45</b>	50			}			
	5	M	<b>43</b>	48			}			
	6	E	<b>78</b>	80			}			
	7	M	<b>62</b>	51			}			}
	8	M	<b>54</b>	49			}			
	9	M	<b>31</b>	30			}			
	10	M	<b>70</b>	67			}			
	11	M	<b>51</b>	52			}			
	12	M	<b>43</b>	42			}			
	13	M	<b>48</b>	45			}			
	14	M	<b>27</b>	24			}			
	15	M	<b>22</b>	26			}			
	16	M	<b>25</b>	26			}			
	17	M	<b>27</b>	23			}			
	18	H	<b>13</b>	14			}			

	Question	Difficulty	School (% correct)	Comp Group (% correct)	Difference between School and Comparable Group					
					-10%	-5%	0%	+5%	+10%	
Mathematics - Non Calculator	19	H	<b>14</b>	18			}			
	20	M	<b>67</b>	64			}			
	21	M	<b>29</b>	33			}			
	22	M	<b>77</b>	74			}			
	23	E	<b>88</b>	85			}			
	24	M	<b>49</b>	48			}			
	25	M	<b>60</b>	60			}			
	26	M	<b>62</b>	61			}			
	27	M	<b>42</b>	43			}			
	28	M	<b>48</b>	48			}			
	29	M	<b>49</b>	55			}			
	30	M	<b>47</b>	44			}			
	31	M	<b>41</b>	40			}			
	32	M	<b>60</b>	57			}			
	33	M	<b>55</b>	53			}			
	34	M	<b>24</b>	26			}			
	35	M	<b>36</b>	36			}			
	36	M	<b>28</b>	26			}			

Your students performed **significantly worse** on questions that fall in the dark blue column to the left, and **significantly better** on questions that fall in the light blue column to the right.

# Writing Skills Skill Analysis

The left column indicates how many questions your students answered correctly. The right column shows your students' performance on each question by skill category. For more information about using Readistep results, visit [readistep.collegeboard.org](http://readistep.collegeboard.org).

**Group**

- x School
- G State
- F Nation

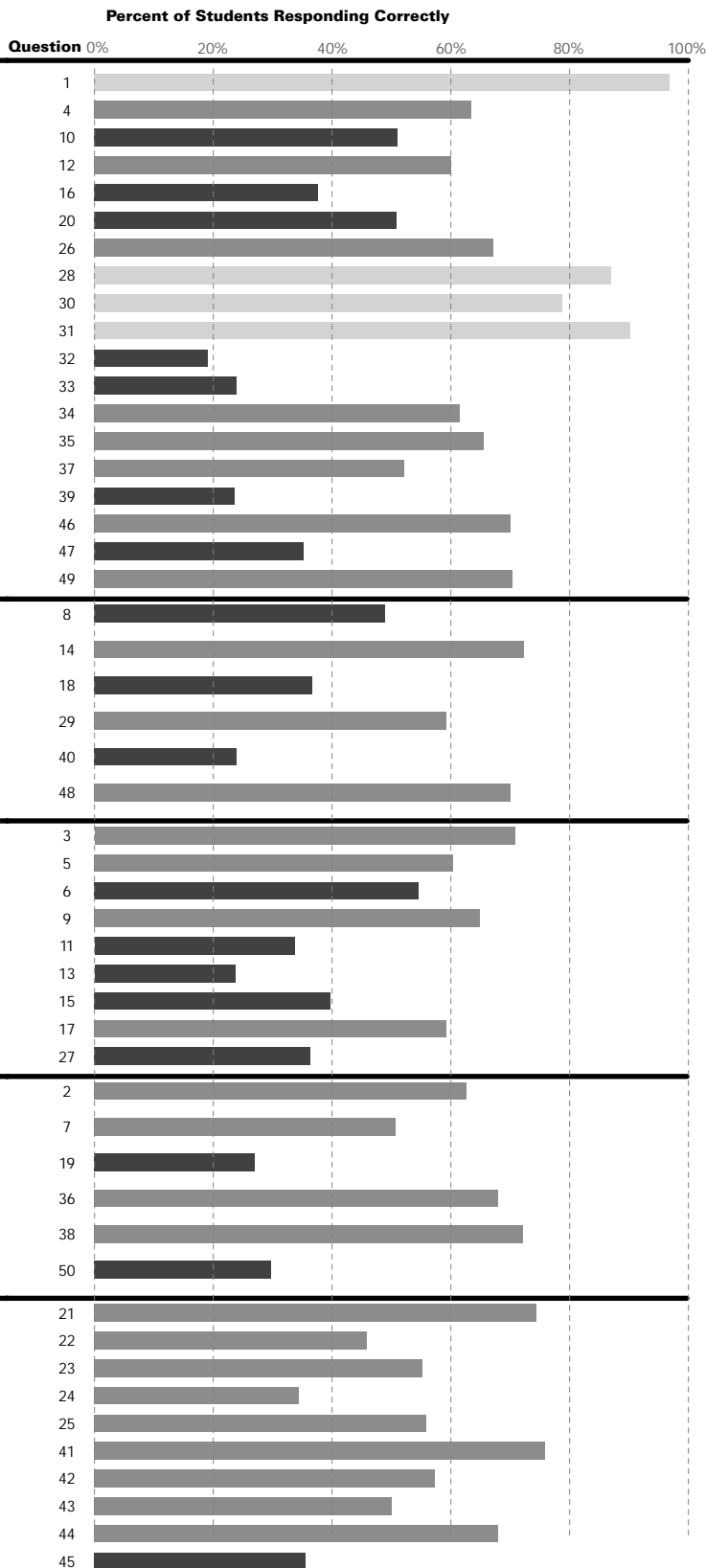
**Difficulty**

- Easy
- Medium
- Hard

## Manage Word Choice and Grammatical Relationships Between Words

Understand relationships between and among words including subject-verb agreement, pronouns, and verb form and tense.

11.0 of 19 questions correct



## Manage Grammatical Structures Used to Modify or Compare

Understand correct use of adjectives, adverbs, comparative structures (neither/nor), and phrases used to modify or compare.

3.1 of 6 questions correct



## Manage Phrases and Clauses in a Sentence

Use sentence structures (parallelism, connectives & relative clauses) to indicate relationships between & among sentence elements.

4.4 of 9 questions correct



## Recognize Correctly Formed Sentences

Recognize correct sentence structure.

3.1 of 6 questions correct



## Manage Order and Relationships of Sentences and Paragraphs

Identify how to order the elements of a sentence or paragraph to improve clarity, meaning, and the progression of ideas.

5.5 of 10 questions correct



# Writing Skills Question Analysis

This section shows the distribution of correct and incorrect answers for your students, state and nation. Take the next step: Review questions and answer options in the test book, and then develop instructional remediation plans.

Question	Difficulty Group	Answer Data (% and correct answer in bold)					Answer Distribution				
		A	B	C	D	omitted	Correct Answer	20%	40%	60%	80%
Writing	1 E	School	2	<b>97</b>	1	1	0	B			
		State	2	<b>95</b>	2	1	0	A			
		Nation	3	<b>95</b>	2	1	0	A			
	2 M	School	<b>63</b>	30	3	5	0	A B C D			
		State	<b>66</b>	26	3	5	1	A B C D			
		Nation	<b>67</b>	25	2	6	0	A B C D			
	3 M	School	15	3	<b>71</b>	11	0	C A B D			
		State	14	2	<b>72</b>	11	1	C A B D			
		Nation	13	2	<b>71</b>	14	0	C A B D			
	4 M	School	2	2	<b>63</b>	33	0	C A B D			
		State	2	2	<b>66</b>	29	1	C A B D			
		Nation	3	2	<b>69</b>	26	0	C A B D			
	5 M	School	12	21	6	<b>60</b>	0	D A B C			
		State	13	20	7	<b>59</b>	1	D A B C			
		Nation	14	20	7	<b>58</b>	0	D A B C			
	6 H	School	10	26	10	<b>55</b>	0	D A B C			
		State	10	23	10	<b>56</b>	2	D A B C			
		Nation	9	25	10	<b>55</b>	1	D A B C			
	7 M	School	<b>51</b>	38	5	6	0	A B C D			
		State	<b>55</b>	34	5	5	1	A B C D			
Nation		<b>54</b>	37	5	4	0	A B C D				
8 H	School	7	9	35	<b>49</b>	0	D A B C				
	State	8	8	32	<b>49</b>	2	D A B C				
	Nation	10	10	34	<b>46</b>	1	D A B C				
9 M	School	3	14	<b>65</b>	18	0	C A B D				
	State	3	15	<b>63</b>	16	2	C A B D				
	Nation	3	15	<b>64</b>	17	0	C A B D				
10 H	School	33	<b>51</b>	7	9	0	B A C D				
	State	32	<b>50</b>	7	9	2	B A C D				
	Nation	34	<b>50</b>	7	8	1	B A C D				
11 H	School	21	41	<b>34</b>	4	0	C A B D				
	State	22	34	<b>36</b>	5	4	C A B D				
	Nation	23	35	<b>35</b>	6	1	C A B D				
12 M	School	5	24	11	<b>60</b>	1	D A B C				
	State	6	20	9	<b>60</b>	4	D A B C				
	Nation	6	21	11	<b>62</b>	1	D A B C				
13 H	School	41	12	<b>24</b>	22	1	C A B D				
	State	35	12	<b>30</b>	19	5	C A B D				
	Nation	36	13	<b>31</b>	19	1	C A B D				
14 M	School	9	7	12	<b>72</b>	0	D A B C				
	State	7	9	10	<b>68</b>	6	D A B C				
	Nation	9	9	12	<b>69</b>	1	D A B C				
15 H	School	<b>40</b>	42	10	8	0	A B C D				
	State	<b>40</b>	37	8	7	8	A B C D				
	Nation	<b>38</b>	44	9	9	1	A B C D				
16 H	School	28	22	<b>38</b>	12	1	C A B D				
	State	23	19	<b>38</b>	10	10	C A B D				
	Nation	27	22	<b>38</b>	11	2	C A B D				
17 M	School	6	<b>59</b>	5	30	1	B A C D				
	State	6	<b>56</b>	4	24	10	B A C D				
	Nation	6	<b>62</b>	5	27	1	B A C D				
18 H	School	6	45	<b>37</b>	12	1	C A B D				
	State	6	36	<b>36</b>	11	12	C A B D				
	Nation	8	37	<b>41</b>	12	2	C A B D				
19 H	School	<b>27</b>	28	24	20	1	A B C D				
	State	<b>28</b>	23	19	16	13	A B C D				
	Nation	<b>29</b>	27	25	17	2	A B C D				
20 H	School	10	24	14	<b>51</b>	1	D A B C				
	State	9	24	10	<b>44</b>	13	D A B C				
	Nation	11	26	13	<b>49</b>	2	D A B C				

# Writing Skills Question Analysis

Question	Difficulty	Group	Answer Data (% and correct answer in bold)					Answer Distribution				
			A	B	C	D	omitted	Correct Answer	20%	40%	60%	80%
21	M	School	<b>74</b>	5	14	6	1	<b>A</b>	B C D			
		State	<b>63</b>	4	11	5	17		B C D			
		Nation	<b>73</b>	6	12	6	2		B C D			
22	M	School	39	<b>46</b>	4	10	1	<b>B</b>	A C D			
		State	28	<b>43</b>	4	7	18		A C D			
		Nation	35	<b>49</b>	4	8	3		A C D			
23	M	School	<b>55</b>	21	10	13	1	<b>A</b>	B C D			
		State	<b>46</b>	15	11	9	20		B C D			
		Nation	<b>53</b>	20	13	11	3		B C D			
24	M	School	10	49	6	<b>35</b>	1	<b>D</b>	A B C			
		State	6	35	4	<b>34</b>	21		A B C			
		Nation	7	44	6	<b>40</b>	4		A B C			
25	M	School	10	<b>56</b>	26	7	1	<b>B</b>	A C D			
		State	6	<b>45</b>	21	6	23		A C D			
		Nation	8	<b>57</b>	24	7	4		A C D			
26	M	School	3	3	<b>67</b>	26	1	<b>C</b>	A B D			
		State	2	3	<b>50</b>	20	25		A B D			
		Nation	3	5	<b>63</b>	23	5		A B D			
27	H	School	6	<b>36</b>	4	52	2	<b>B</b>	A C D			
		State	4	<b>33</b>	3	34	26		A C D			
		Nation	7	<b>35</b>	5	49	5		A C D			
28	E	School	6	2	<b>87</b>	3	1	<b>C</b>	A B D			
		State	5	2	<b>65</b>	3	26		A B D			
		Nation	6	3	<b>82</b>	4	5		A B D			
29	M	School	16	<b>59</b>	2	20	1	<b>B</b>	A C D			
		State	9	<b>49</b>	2	14	27		A C D			
		Nation	15	<b>58</b>	4	18	6		A C D			
30	E	School	<b>79</b>	3	4	12	2	<b>A</b>	B C D			
		State	<b>60</b>	2	3	8	28		B C D			
		Nation	<b>75</b>	4	4	11	6		B C D			
31	E	School	3	1	<b>90</b>	4	2	<b>C</b>	A D			
		State	2	1	<b>66</b>	3	28		A D			
		Nation	3	2	<b>83</b>	5	6		A D			
32	H	School	20	<b>19</b>	5	53	3	<b>B</b>	A C D			
		State	12	<b>16</b>	4	39	29		A C D			
		Nation	17	<b>16</b>	5	55	7		A C D			
33	H	School	7	32	<b>24</b>	34	3	<b>C</b>	A B D			
		State	5	20	<b>22</b>	22	30		A B D			
		Nation	7	28	<b>26</b>	31	8		A B D			
34	M	School	<b>62</b>	5	4	27	3	<b>A</b>	B C D			
		State	<b>45</b>	3	3	18	31		B C D			
		Nation	<b>53</b>	4	5	29	8		B C D			
35	M	School	2	<b>65</b>	3	26	3	<b>B</b>	A C D			
		State	2	<b>47</b>	2	17	31		A C D			
		Nation	2	<b>58</b>	4	26	9		A C D			
36	M	School	11	14	3	<b>68</b>	3	<b>D</b>	A B C			
		State	6	8	3	<b>51</b>	32		A B C			
		Nation	9	11	4	<b>67</b>	9		A B C			
37	M	School	5	<b>52</b>	7	33	4	<b>B</b>	A C D			
		State	3	<b>41</b>	4	20	33		A C D			
		Nation	6	<b>48</b>	7	29	10		A C D			
38	M	School	11	6	7	<b>72</b>	4	<b>D</b>	A B C			
		State	6	4	4	<b>52</b>	33		A B C			
		Nation	9	8	7	<b>66</b>	11		A B C			
39	H	School	6	<b>24</b>	7	58	5	<b>B</b>	A C D			
		State	4	<b>20</b>	4	39	33		A C D			
		Nation	6	<b>22</b>	6	55	11		A C D			
40	H	School	10	<b>21</b>	10	52	5	<b>B</b>	A C D			
		State	5	<b>21</b>	6	34	34		A C D			
		Nation	9	<b>26</b>	10	44	11		A C D			

# Writing Skills Question Analysis

Question	Difficulty	Group	Answer Data (% and correct answer in bold)					Answer Distribution					
			A	B	C	D	omitted	Correct Answer	20%	40%	60%	80%	
Writing	41	M	School	7	5	6	<b>76</b>	7	D	A B C			
			State	4	3	3	<b>53</b>	37		A B C			
			Nation	6	4	6	<b>70</b>	14		A B C			
	42	M	School	15	<b>57</b>	13	8	7	B	A C D			
			State	9	<b>42</b>	7	5	37		A C D			
			Nation	13	<b>52</b>	12	8	15		A C D			
	43	M	School	15	24	<b>50</b>	3	8	C	A B D			
			State	9	13	<b>39</b>	2	38		A B D			
			Nation	15	20	<b>46</b>	3	16		A B D			
	44	M	School	5	<b>68</b>	8	11	8	B	A C D			
			State	3	<b>48</b>	4	6	39		A C D			
			Nation	7	<b>59</b>	9	8	17		A C D			
	45	H	School	18	29	8	<b>36</b>	9	D	A B C			
			State	10	18	4	<b>29</b>	40		A B C			
			Nation	15	24	6	<b>36</b>	18		A B C			
46	M	School	5	11	<b>70</b>	3	10	C	A B D				
		State	3	7	<b>48</b>	2	41		A B D				
		Nation	5	10	<b>63</b>	3	19		A B D				
47	H	School	30	<b>35</b>	21	3	11	B	A C D				
		State	17	<b>29</b>	12	2	41		A C D				
		Nation	25	<b>33</b>	19	3	20		A C D				
48	M	School	9	<b>70</b>	7	3	11	B	A C D				
		State	5	<b>48</b>	4	2	41		A C D				
		Nation	7	<b>62</b>	7	4	20		A C D				
49	M	School	3	6	10	<b>70</b>	11	D	A B C				
		State	2	4	6	<b>47</b>	42		A B C				
		Nation	3	7	10	<b>58</b>	21		A B C				
50	H	School	28	<b>30</b>	5	27	11	B	A C D				
		State	16	<b>24</b>	3	15	42		A C D				
		Nation	22	<b>30</b>	5	22	21		A C D				

# Writing Skills Comparable Group Analysis

## What is a comparable group?

A comparable group is a statistically generated group that allows you to identify questions where your students' performance diverges from what might be expected based on their overall performance. It is a sample of students whose overall performance was similar to the performance of your student population. This group is compiled based on performance only, and does not account for attributes like student demographics, geographic region or school size.

## How is this information useful?

Focusing on questions where your students' performance is significantly lower than the comparable group performance can reveal opportunities where you might realistically expect to improve student learning. Similarly, when your students' performance is significantly higher than the comparable group performance, you can identify strengths in your curriculum and instruction, and work to ensure that those strengths are recognized and maintained.

Question	Difficulty	School (% correct)	Comp Group (% correct)	Difference between School and Comparable Group					
				-10%	-5%	0%	+5%	+10%	
1	E	<b>97</b>	95					}	
2	M	<b>63</b>	69	}					
3	M	<b>71</b>	72		}				
4	M	<b>63</b>	69	}					
5	M	<b>60</b>	60		}				
6	H	<b>55</b>	54		}				
7	M	<b>51</b>	55	}					
8	H	<b>49</b>	45		}				
9	M	<b>65</b>	65		}				
10	H	<b>51</b>	50		}				
11	H	<b>34</b>	35		}				
12	M	<b>60</b>	63		}				
13	H	<b>24</b>	31	}					
14	M	<b>72</b>	71		}				
15	H	<b>40</b>	38		}				
16	H	<b>38</b>	39		}				
17	M	<b>59</b>	64	}					
18	H	<b>37</b>	44	}					
19	H	<b>27</b>	31	}					
20	H	<b>51</b>	50		}				
21	M	<b>74</b>	74		}				
22	M	<b>46</b>	50	}					
23	M	<b>55</b>	54		}				
24	M	<b>35</b>	37	}					
25	M	<b>56</b>	59	}					

Question	Difficulty	School (% correct)	Comp Group (% correct)	Difference between School and Comparable Group					
				-10%	-5%	0%	+5%	+10%	
26	M	<b>67</b>	67					}	
27	H	<b>36</b>	36					}	
28	E	<b>87</b>	86			}			
29	M	<b>59</b>	61		}				
30	E	<b>79</b>	80		}				
31	E	<b>90</b>	88		}				
32	H	<b>19</b>	15		}			}	
33	H	<b>24</b>	26		}				
34	M	<b>62</b>	56		}			}	
35	M	<b>65</b>	61		}			}	
36	M	<b>68</b>	71		}				
37	M	<b>52</b>	51		}				
38	M	<b>72</b>	71		}				
39	H	<b>24</b>	22		}			}	
40	H	<b>24</b>	25		}				
41	M	<b>76</b>	73		}			}	
42	M	<b>57</b>	55		}			}	
43	M	<b>50</b>	49		}			}	
44	M	<b>68</b>	63		}			}	
45	H	<b>36</b>	37		}			}	
46	M	<b>70</b>	67		}			}	
47	H	<b>35</b>	34		}			}	
48	M	<b>70</b>	66		}			}	
49	M	<b>70</b>	63		}			}	
50	H	<b>30</b>	31		}			}	

Your students performed **significantly worse** on questions that fall in the dark blue column to the left, and **significantly better** on questions that fall in the light blue column to the right.