



## **AP<sup>®</sup> Music Theory: Sight-Singing 2013 Free-Response Questions**

### **About the College Board**

The College Board is a mission-driven not-for-profit organization that connects students to college success and opportunity. Founded in 1900, the College Board was created to expand access to higher education. Today, the membership association is made up of more than 6,000 of the world's leading educational institutions and is dedicated to promoting excellence and equity in education. Each year, the College Board helps more than seven million students prepare for a successful transition to college through programs and services in college readiness and college success — including the SAT<sup>®</sup> and the Advanced Placement Program<sup>®</sup>. The organization also serves the education community through research and advocacy on behalf of students, educators, and schools.

© 2013 The College Board. College Board, Advanced Placement Program, AP, AP Central, SAT, and the acorn logo are registered trademarks of the College Board. Admitted Class Evaluation Service and inspiring minds are trademarks owned by the College Board. All other products and services may be trademarks of their respective owners. Visit the College Board on the Web: [www.collegeboard.org](http://www.collegeboard.org). Permission to use copyrighted College Board materials may be requested online at: [www.collegeboard.org/inquiry/cbpermit.html](http://www.collegeboard.org/inquiry/cbpermit.html).

**Visit the College Board on the Web: [www.collegeboard.org](http://www.collegeboard.org).**

**AP Central is the official online home for the AP Program: [apcentral.collegeboard.org](http://apcentral.collegeboard.org).**



# 2013 AP<sup>®</sup> MUSIC THEORY FREE-RESPONSE QUESTIONS

## MUSIC THEORY

### SECTION II, Part B

Time — Approximately 10 minutes

#### Questions 1 and 2


*Assignment:* For each of the two given melodies, sing the pitches in accurate rhythm and with a steady tempo.

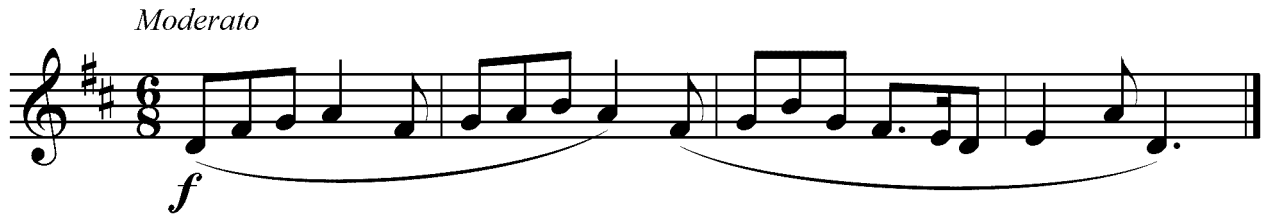
*Procedure:* For each melody, you will have 75 seconds to practice and 30 seconds to perform the melody. You will hear the starting pitch for each melody at the beginning of the 75-second practice period. After the end of the practice period, you will have 30 seconds to perform the melody. A recorded announcement will alert you to the end of each practice and performance period. Directions on the recording will assist you in operating the recorder.

*Your performance:*


- a) You may sing note names (*c-d-e*), syllable names (*do-re-mi*), scale-degree numbers (*1-2-3*), or a neutral syllable (for example, *ta-ta-ta*).
- b) Even though you will hear the starting pitch of the printed melody, you may transpose the melody to a key that is comfortable.
- c) You should use some of the practice time to perform out loud. You may write on the music if you wish.
- d) You may not use any device (for example, a metronome or a musical instrument) to assist you in your practice or performance.
- e) You will be evaluated on pitch accuracy (relative to tonic), rhythm, and continuity (maintaining a steady tempo). You may start over if you need to, but there will be a deduction from your score. You will not be evaluated on the quality of your singing voice.

**2013 AP<sup>®</sup> MUSIC THEORY FREE-RESPONSE QUESTIONS**

**Question 1.** Look over the melody and begin practicing. You have 75 seconds to practice. This is the starting pitch of the printed melody. 



**2013 AP<sup>®</sup> MUSIC THEORY FREE-RESPONSE QUESTIONS**

**Question 2.** Look over the melody and begin practicing. You have 75 seconds to practice. This is the starting pitch of the printed melody. 

*Moderato*



*f*