



AP[®] Music Theory: Sight-Singing 2012 Scoring Guidelines

The College Board

The College Board is a mission-driven not-for-profit organization that connects students to college success and opportunity. Founded in 1900, the College Board was created to expand access to higher education. Today, the membership association is made up of more than 5,900 of the world's leading educational institutions and is dedicated to promoting excellence and equity in education. Each year, the College Board helps more than seven million students prepare for a successful transition to college through programs and services in college readiness and college success — including the SAT[®] and the Advanced Placement Program[®]. The organization also serves the education community through research and advocacy on behalf of students, educators, and schools. The College Board is committed to the principles of excellence and equity, and that commitment is embodied in all of its programs, services, activities, and concerns.

© 2012 The College Board. College Board, Advanced Placement Program, AP, SAT and the acorn logo are registered trademarks of the College Board. All other products and services may be trademarks of their respective owners. Permission to use copyrighted College Board materials may be requested online at: www.collegeboard.com/inquiry/cbpermit.html.

Visit the College Board on the Web: www.collegeboard.org.

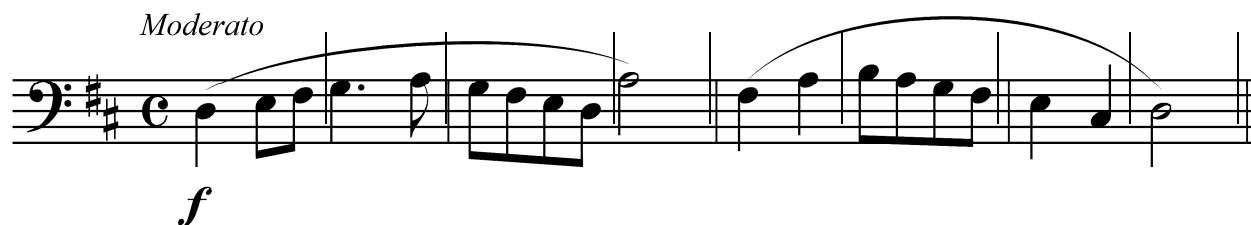
AP Central is the official online home for the AP Program: apcentral.collegeboard.org.



AP[®] MUSIC THEORY

2012 SCORING GUIDELINES

Question S1



SCORING: 9 points

Use EITHER the regular scoring guide OR one of the alternate scoring guides, whichever gives the higher score.

I. Regular Scoring Guide

- A. Score 1 point for each segment (i.e., each half-measure) correct in pitch, rhythm, and tempo (0–8).
- B. If at least one segment is correct using **I.A.**, add 1 point for a complete response that has no hesitations or restarts (= overall flow; the “flow” point).
- C. Record any score of 4 or higher and move to the next tape/CD.
- D. If the score is less than 4, try an alternate scoring guide.

II. Alternate Scoring Guides (N.B.: Do NOT award the “flow” point in the alternate scoring guides.)

- A. If a student sings many of the pitches correctly but is consistently inaccurate in rhythm, you may determine holistically to award up to 4 points for pitch.
OR
- B. If a student is accurate or nearly accurate with respect to rhythm but is consistently inaccurate in pitches, you may determine holistically to award up to 2 points for rhythm.

III. Other Scores with Special Meanings

- 1 This score may be given to a response that has two or more redeeming qualities (e.g., retention of the tonic pitch and singing the melody with a correct contour; persistence alone is *not* a redeeming quality).
- 0 This score is used for a response that has no redeeming qualities (or only one) or a response that is off topic or irrelevant.
- The dash is reserved for blank tapes/CDs.

Notes:

- A. If a student restarts, score the last *complete* response, but do *not* award the “flow” point.
- B. Score from the tonic established by the student. However, credit any exactly transposed segment approached by the correct interval. In other words, *any segment entered correctly (by the correct interval) is eligible for the point.*
- C. If the student changes tempo and continues in the new tempo, do not credit the segment where the change occurs, but credit the ensuing segments.
- D. The last note must be held at least to the attack of the eighth (8th) eighth-note pulse of the measure for the last segment to receive credit.
- E. Ignore any use (correct or incorrect) of syllables, letter names, or numbers, as well as expletives, giggles, and the like.
- F. If you try both regular and alternate guides, record the higher of the scores.
- G. Scores from one guide may *not* be combined with those of another.
- H. Listen beyond the end of the performance to ensure that the student makes no additional response.

AP[®] MUSIC THEORY 2012 SCORING GUIDELINES

Question S2



SCORING: 9 points

Use EITHER the regular scoring guide OR one of the alternate scoring guides, whichever gives the higher score.

I. Regular Scoring Guide

- A. Score 1 point for each segment (i.e., each half-measure) correct in pitch, rhythm, and tempo (0–8).
- B. If at least one segment is correct using **I.A.**, add 1 point for a complete response that has no hesitations or restarts (= overall flow; the “flow” point).
- C. Record any score of 4 or higher and move to the next tape/CD.
- D. If the score is less than 4, try an alternate scoring guide.

II. Alternate Scoring Guides (N.B.: Do *NOT* award the “flow” point in the alternate scoring guide.)

- A. If a student sings many of the pitches correctly but is consistently inaccurate in rhythm, you may determine holistically to award up to 4 points for pitch.
OR
- B. If a student is accurate or nearly accurate with respect to rhythm but is consistently inaccurate in pitches, you may determine holistically to award up to 2 points for rhythm.

III. Other Scores with Special Meanings

- 1 This score may be given to responses that have two or more redeeming qualities (e.g., retention of the tonic pitch and singing the melody with a correct contour; persistence alone is *not* a redeeming quality).
- 0 This score is used for a response that has no redeeming qualities (or only one) or a response that is off topic or irrelevant.
- The dash is reserved for blank tapes/CDs.

Notes:

- A. If a student restarts, score the last *complete* response, but do *not* award the “flow” point.
- B. Score from the tonic established by the student. However, credit any exactly transposed segment approached by the correct interval. In other words, *any segment entered correctly (by the correct interval) is eligible for the point.*
- C. If the student changes tempo and continues in the new tempo, do not credit the segment where the change occurs, but credit the ensuing segments.
- D. The last note must be held at least to the attack of the final eighth note of measure four for that segment to receive credit.
- E. Ignore any use (correct or incorrect) of syllables, letter names, or numbers, as well as expletives, giggles, and the like.
- F. If you try both regular and alternate guides, record the higher of the scores.
- G. Scores from one guide may *not* be combined with those of another.
- H. Listen beyond the end of the performance to ensure that the student makes no additional response.