



AP[®] Japanese Language and Culture 2008 Free-Response Questions

The College Board: Connecting Students to College Success

The College Board is a not-for-profit membership association whose mission is to connect students to college success and opportunity. Founded in 1900, the association is composed of more than 5,000 schools, colleges, universities, and other educational organizations. Each year, the College Board serves seven million students and their parents, 23,000 high schools, and 3,500 colleges through major programs and services in college admissions, guidance, assessment, financial aid, enrollment, and teaching and learning. Among its best-known programs are the SAT[®], the PSAT/NMSQT[®], and the Advanced Placement Program[®] (AP[®]). The College Board is committed to the principles of excellence and equity, and that commitment is embodied in all of its programs, services, activities, and concerns.

© 2008 The College Board. All rights reserved. College Board, Advanced Placement Program, AP, AP Central, SAT, and the acorn logo are registered trademarks of the College Board. PSAT/NMSQT is a registered trademark of the College Board and National Merit Scholarship Corporation. Permission to use copyrighted College Board materials may be requested online at: www.collegeboard.com/inquiry/cbpermit.html.

Visit the College Board on the Web: www.collegeboard.com.

AP Central is the official online home for the AP Program: apcentral.collegeboard.com.

2008 AP® JAPANESE LANGUAGE AND CULTURE FREE-RESPONSE QUESTIONS

Overview

Key screen images from the free-response section of the AP Japanese Language and Culture Exam are included in this document. The actual exam includes other screens, such as message boxes and help screens, which students may view while taking the exam. On screens where the “Show Time” button appears, students have the option to display the time remaining to complete the task. The exam screens are dynamic, with changing information (e.g., audio progress bar, count-down clock), while the screen images that follow are static, representing a particular moment during the exam.

This document also includes scripts for recorded material that students heard during the exam. However, recording scripts are not provided for directions screens, where the audio portion matches verbatim the text appearing on the screen.

Writing Part Directions

You will participate in a simulated exchange of text-chat messages and respond to prompts that require extended responses.

The input method for typing Japanese text is the Microsoft IME. This method allows you to type in different modes, which you can select from the drop-down list as necessary. Hiragana mode (ひらがな) allows you to produce hiragana and to convert to kanji and katakana. F-W Katakana (Full-width Katakana) mode (カタカナ) allows you to produce katakana. Direct Input mode (A) allows you to produce English letters. Note that you should use English letters only in cases where they would normally be used in authentic Japanese writing. Do not use romaji or English as a substitute for words that should be written in Japanese.

For all tasks, you will have a specific amount of response time. A clock at the top of the screen will show you how much time is remaining to write your response.

When the response time has ended, you will automatically go on to the next question. You cannot return to previous questions.

Writing Part Directions: Text Chat

You will participate in a simulated exchange of text-chat messages. Each time it is your turn to write, you will have 90 seconds to respond. You should respond as fully and as appropriately as possible.

There will be six times when it is your turn to write.

You will now begin this part.

2008 AP® JAPANESE LANGUAGE AND CULTURE FREE-RESPONSE QUESTIONS

AP Japanese Language & Culture - Writing

CollegeBoard

Question 1 of 8

SHOW TIME

HELP ?

Directions: You will participate in a simulated exchange of text-chat messages. Each time it is your turn to write, you will have 90 seconds to respond. You should respond as fully and as appropriately as possible.

You will have a conversation with Akira Nakamura, a high school student in Japan, about how high school students dress.

Give some examples.

高校生の服装について質問します。アメリカの高校生はたいていどんな洋服を着て学校に行きますか。

Cut Paste Undo Redo Hide Char. Count 0 Hiragana

2008 AP® JAPANESE LANGUAGE AND CULTURE FREE-RESPONSE QUESTIONS

AP Japanese Language & Culture - Writing HELP ?

CollegeBoard Question 2 of 8 SHOW TIME

Directions: You will participate in a simulated exchange of text-chat messages. Each time it is your turn to write, you will have 90 seconds to respond. You should respond as fully and as appropriately as possible.

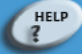

You will have a conversation with Akira Nakamura, a high school student in Japan, about how high school students dress.

Give some examples.

そうですか。ではどんな服を学校に着て行ってはいけないことになっていますか。

Cut Paste Undo Redo Hide Char. Count 0 Hiragana

2008 AP® JAPANESE LANGUAGE AND CULTURE FREE-RESPONSE QUESTIONS

AP Japanese Language & Culture - Writing																		
	Question 3 of 8	SHOW TIME																
<p>Directions: You will participate in a simulated exchange of text-chat messages. Each time it is your turn to write, you will have 90 seconds to respond. You should respond as fully and as appropriately as possible.</p>																		
<p>You will have a conversation with Akira Nakamura, a high school student in Japan, about how high school students dress.</p>																		
<p>Respond.</p> <p>もし生徒が着てはいけない服を着ていたら、先生はどうしますか。</p>	<table border="1"><tr><td>Cut</td><td>Paste</td><td>Undo</td><td>Redo</td><td>Hide Char. Count</td><td>0</td><td>Hiragana</td><td>▼</td></tr><tr><td colspan="8" style="height: 300px; vertical-align: top;"> </td></tr></table>		Cut	Paste	Undo	Redo	Hide Char. Count	0	Hiragana	▼								
Cut	Paste	Undo	Redo	Hide Char. Count	0	Hiragana	▼											

2008 AP® JAPANESE LANGUAGE AND CULTURE FREE-RESPONSE QUESTIONS

AP Japanese Language & Culture - Writing

CollegeBoard

Question 4 of 8

SHOW TIME

HELP ?

Directions: You will participate in a simulated exchange of text-chat messages. Each time it is your turn to write, you will have 90 seconds to respond. You should respond as fully and as appropriately as possible.

You will have a conversation with Akira Nakamura, a high school student in Japan, about how high school students dress.

Justify your opinion.

日本には制服のある高校が多いのですが、あなたは学校に制服があったほうが良いと思いますか。それはどうしてですか。

Cut Paste Undo Redo Hide Char. Count 0 Hiragana

2008 AP® JAPANESE LANGUAGE AND CULTURE FREE-RESPONSE QUESTIONS

AP Japanese Language & Culture - Writing HELP ?

CollegeBoard Question 5 of 8 SHOW TIME

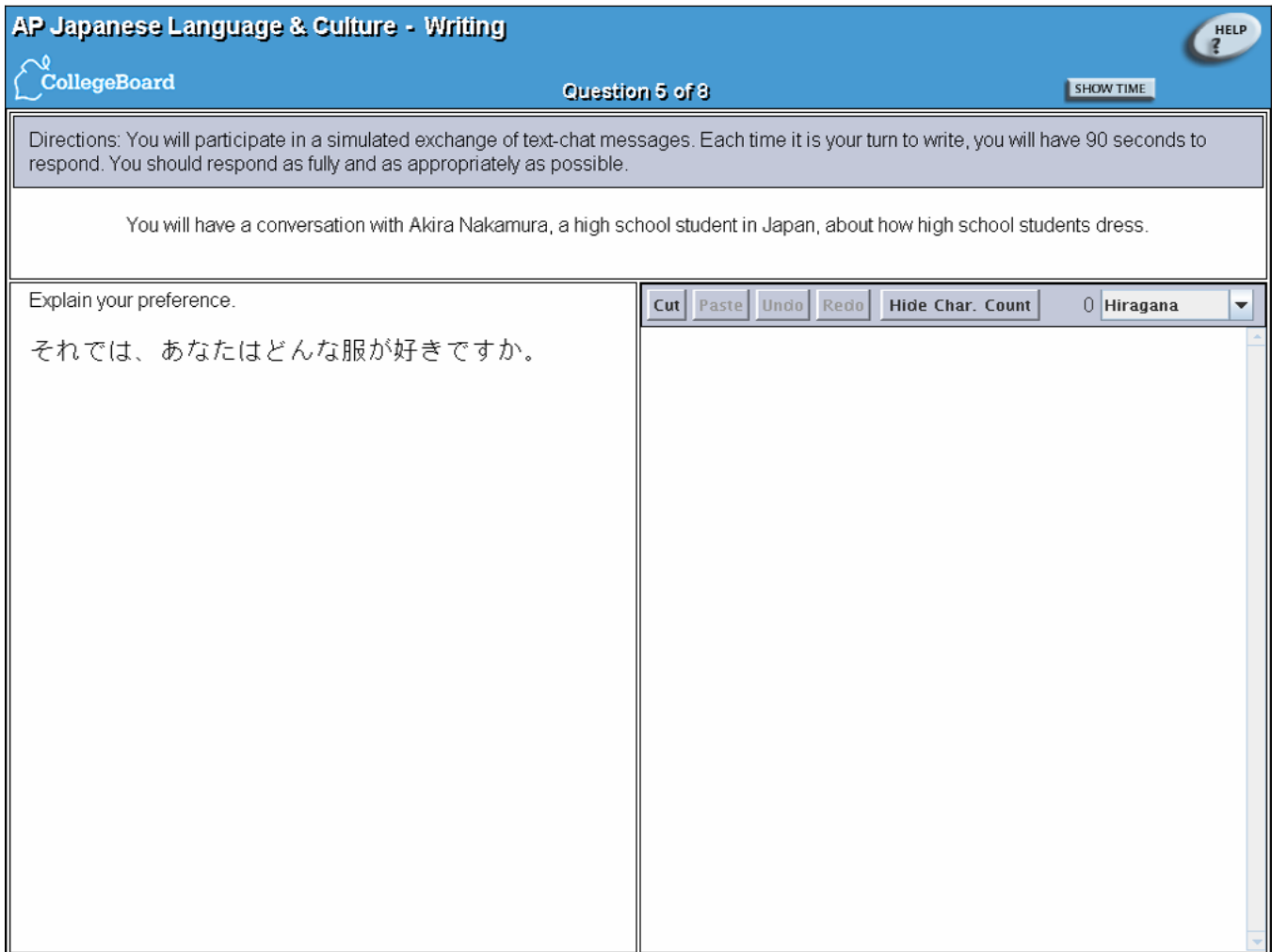
Directions: You will participate in a simulated exchange of text-chat messages. Each time it is your turn to write, you will have 90 seconds to respond. You should respond as fully and as appropriately as possible.

You will have a conversation with Akira Nakamura, a high school student in Japan, about how high school students dress.

Explain your preference.

それでは、あなたはどんな服が好きですか。

Cut Paste Undo Redo Hide Char. Count 0 Hiragana



2008 AP® JAPANESE LANGUAGE AND CULTURE FREE-RESPONSE QUESTIONS

AP Japanese Language & Culture - Writing HELP ?

CollegeBoard Question 6 of 8 SHOW TIME

Directions: You will participate in a simulated exchange of text-chat messages. Each time it is your turn to write, you will have 90 seconds to respond. You should respond as fully and as appropriately as possible.

You will have a conversation with Akira Nakamura, a high school student in Japan, about how high school students dress.

Ask a specific question.

それでは、日本の高校生のファッションについて、何か聞いてください。

Cut Paste Undo Redo Hide Char. Count 0 Hiragana

Writing Part Directions: Extended Writing

You will be asked to write in Japanese in a variety of ways. In each case, you will be asked to write for a specific purpose and for a specific audience. You should write in as complete a manner as possible, taking into account the purpose and the audience described.

There will be two writing tasks.

You will now begin this part.

2008 AP® JAPANESE LANGUAGE AND CULTURE FREE-RESPONSE QUESTIONS

AP Japanese Language & Culture - Writing



Question 7 of 8

SHOW TIME



Directions: You will be asked to write in Japanese in a variety of ways. In each case, you will be asked to write for a specific purpose and for a specific audience. You should write in as complete a manner as possible, taking into account the purpose and the audience described.

You are writing an article for the student newspaper of your sister school in Japan. Write an article in which you compare and contrast using only kana and kanji and using only romaji. Based on your personal experience, describe at least THREE aspects of each and highlight the similarities and differences between using only kana and kanji and using only romaji. Also, state your preference and give reasons for it.

Your article should be 300 to 400 characters or longer. Use the *desu/masu* or *da* (plain) style, but use one style consistently. Also, use kanji wherever kanji from the AP Japanese kanji list is appropriate. You have 20 minutes to write.

Cut Paste Undo Redo Hide Char. Count 0 Hiragana

2008 AP® JAPANESE LANGUAGE AND CULTURE FREE-RESPONSE QUESTIONS

AP Japanese Language & Culture - WritingHELP ?CollegeBoardQuestion 8 of 8SHOW TIME

Directions: You will be asked to write in Japanese in a variety of ways. In each case, you will be asked to write for a specific purpose and for a specific audience. You should write in as complete a manner as possible, taking into account the purpose and the audience described.

You are responding to a posting in a Web forum for high school students of Japanese. The posting asks about fictional characters in Japan. Select ONE example of a Japanese fictional character, such as Momotaro, Totoro, etc. Describe in detail at least THREE characteristics of the fictional character. Also, express your opinion or feelings about the fictional character.

Your posting should be 300 to 400 characters or longer. Use the *desu/masu* or *da* (plain) style, but use one style consistently. Also, use kanji wherever kanji from the AP Japanese kanji list is appropriate. You have 20 minutes to write.

Cut Paste Undo Redo Hide Char. Count 0 Hiragana

© 2008 The College Board. All rights reserved.

Visit apcentral.collegeboard.com (for AP professionals) and www.collegeboard.com/apstudents (for students and parents)

13



Speaking Part Directions

You will participate in two simulated conversations and make an announcement and two presentations.

For the announcement and the presentations, you will have a specific amount of preparation time. During the preparation time, a clock will show you how much time is remaining.

For all the tasks, you will have a specific amount of response time. During the response time, a clock will show you how much time is remaining.

When the response time has ended, you will automatically go on to the next question. You cannot return to previous questions.

Your cue to start speaking will always be this tone.



Speaking Part Directions: Conversation

You will participate in a simulated conversation. Each time it is your turn to speak, you will have 20 seconds to record. You should respond as fully and as appropriately as possible.

There will be four times when it is your turn to speak.

You will now begin this part.

2008 AP® JAPANESE LANGUAGE AND CULTURE FREE-RESPONSE QUESTIONS

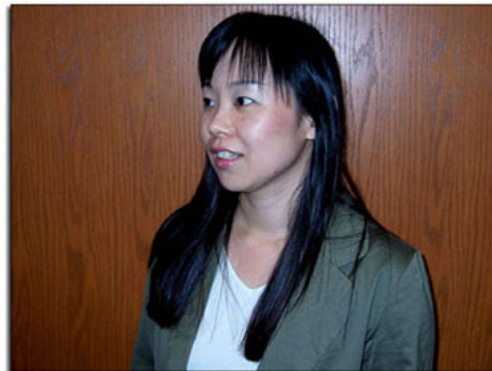
AP Japanese Language & Culture - Speaking



Question 1 of 11

Directions: You will participate in a simulated conversation. Each time it is your turn to speak, you will have 20 seconds to record. You should respond as fully and as appropriately as possible.

You will have a conversation with Yumiko Tanaka, a study-abroad program coordinator, about staying with a family in Japan.



RESPONSE TIME

00 : 00 : 20

Note: Students saw the exam screen above for each of the individual questions that together compose this task. Only the screen image for the first question is shown here, but during the exam, each of the screens indicated the number of the question the students were responding to.

2008 AP® JAPANESE LANGUAGE AND CULTURE FREE-RESPONSE QUESTIONS

The following text is the recording script for the audio portion of the task shown in the previous screen image. Students heard this audio during the exam administration, but this text does not appear in the exam and is provided here for reference only.

N: You will have a conversation with Yumiko Tanaka, a study-abroad program coordinator, about staying with a family in Japan.

Speaking Question 1 of 11

WA: 日本のホストファミリーのことですけど、どんな家族がいいですか。

[TONE]

(20 seconds)

Speaking Question 2 of 11

WA: いつからいつまでホームステイしたいですか。

[TONE]

(20 seconds)

Speaking Question 3 of 11

WA: あ、そうですか。ホストファミリーとどんなことがしたいですか。

[TONE]

(20 seconds)

Speaking Question 4 of 11

WA: 分かりました。じゃ、私もなるべくいいホストファミリーを見つけますから、あなたも日本語の勉強がんばってきてくださいね。

[TONE]

(20 seconds)



Speaking Part Directions: Return Telephone Call

You will participate in a simulated telephone conversation with someone you are calling back after receiving a message. First, you will listen to the voice message. Then the telephone call will begin. Each time it is your turn to speak, you will have 20 seconds to record. You should respond as fully and as appropriately as possible.

There will be four times when it is your turn to speak.

You will now begin this part.

2008 AP® JAPANESE LANGUAGE AND CULTURE FREE-RESPONSE QUESTIONS

AP Japanese Language & Culture - Speaking



Question 5 of 11

Directions: You will participate in a simulated telephone conversation with someone you are calling back after receiving a message. First, you will listen to the voice message. Then the telephone call will begin. Each time it is your turn to speak, you will have 20 seconds to record. You should respond as fully and as appropriately as possible.



RESPONSE TIME

00 : 00 : 20

Note: Students saw the exam screen above for each of the individual questions that together compose this task. Only the screen image for the first question is shown here, but during the exam, each of the screens indicated the number of the question the students were responding to.

2008 AP® JAPANESE LANGUAGE AND CULTURE FREE-RESPONSE QUESTIONS

The following text is the recording script for the audio portion of the task shown in the previous screen image. Students heard this audio during the exam administration, but this text does not appear in the exam and is provided here for reference only.

N: Listen to the voice message.

WA: もしもし、日本[にほん]文化クラブの小林です。今度のクラブ旅行の計画のことで、至急お知らせしたいことがありますので、お電話ください。

N: Now the telephone call will begin. After the phone is answered, begin with a greeting and then explain why you are calling.

([Telephone] [Rings twice and picks up])

Speaking Question 5 of 11

WA: もしもし、小林です。

[TONE]

(20 seconds)

Speaking Question 6 of 11

WA: あのう、実は、二日目の午後のすもうのトーナメントがキャンセルになっちゃったんですよ。

[TONE]

(20 seconds)

Speaking Question 7 of 11

WA: それで、その午後のスケジュールを考えているんですが、どうしたらいいと思いますか。

[TONE]

(20 seconds)

Speaking Question 8 of 11

WA: ああ、そうですね。じゃ、そうしましょう。それじゃ、あとで。

[TONE]

(20 seconds)



Speaking Part Directions: School Announcement

Imagine that you are making an announcement in Japanese to an assembly of Japanese students visiting your school. First, you will see some notes in English about what to include in your announcement. You will have 1 minute to prepare your announcement while you look at the notes. Then you will have 1 minute to record your announcement. Your announcement should have an opening remark, details according to the notes, and a closing remark. Deliver your announcement using complete sentences in *desu/masu* style.

You will now begin this part.

2008 AP® JAPANESE LANGUAGE AND CULTURE FREE-RESPONSE QUESTIONS

AP Japanese Language & Culture - Speaking

VOLUME
9



Question 9 of 11

Directions: Imagine that you are making an announcement in Japanese to an assembly of Japanese students visiting your school. First, you will see some notes in English about what to include in your announcement. You will have 1 minute to prepare your announcement while you look at the notes. Then you will have 1 minute to record your announcement. Your announcement should have an opening remark, details according to the notes, and a closing remark. Deliver your announcement using complete sentences in *desu/masu* style.

Notes:

- Monday, June 1, 8:00 A.M. – 8:00 P.M.
- Trip: Century Theme Park in Jamestown
- Meet at park entrance at 7:45 A.M.
- Cost: \$35 (admission and lunch)
- Tickets: school bookstore

Preparation Time: 60 Seconds
Response Time: 60 Seconds

PREPARATION TIME

00 : 01 : 00

2008 AP[®] JAPANESE LANGUAGE AND CULTURE FREE-RESPONSE QUESTIONS

The following text is the recording script for the audio portion of the task shown in the previous screen image. Students heard this audio during the exam administration, but this text does not appear in the exam and is provided here for reference only.

Speaking Question 9 of 11

N: You have one minute to prepare your announcement.

(60 seconds)

N: You have one minute to record your announcement.

[TONE]

(60 seconds)



Speaking Part Directions: Story Narration

Imagine that you are making an oral presentation to your Japanese class. In your presentation, you will narrate a story. First, you will see pictures depicting the story. You will have 4 minutes to prepare your narration while you look at the pictures. Then you will have 2 minutes to record your narration. Narrate a complete story as suggested by the pictures. Give your story a beginning, a middle, and an end. Narrate your story using complete sentences in *desu/masu* style.

You will now begin this part.

2008 AP® JAPANESE LANGUAGE AND CULTURE FREE-RESPONSE QUESTIONS

AP Japanese Language & Culture - Speaking

VOLUME
9E



Question 10 of 11

Directions: Imagine that you are making an oral presentation to your Japanese class. In your presentation, you will narrate a story. First, you will see pictures depicting the story. You will have 4 minutes to prepare your narration while you look at the pictures. Then you will have 2 minutes to record your narration. Narrate a complete story as suggested by the pictures. Give your story a beginning, a middle, and an end. Narrate your story using complete sentences in *desu/masu* style.



1.



2.



3.



4.

Preparation Time: 240 Seconds
Response Time: 120 Seconds

PREPARATION TIME

00 : 04 : 00

2008 AP[®] JAPANESE LANGUAGE AND CULTURE FREE-RESPONSE QUESTIONS

The following text is the recording script for the audio portion of the task shown in the previous screen image. Students heard this audio during the exam administration, but this text does not appear in the exam and is provided here for reference only.

Speaking Question 10 of 11

N: You have four minutes to prepare your narration.

(240 seconds)

N: You have two minutes to record your narration.

[TONE]

(120 seconds)



Speaking Part Directions: Cultural Perspective Presentation

Imagine that you are making an oral presentation to your Japanese class. First, you will read and hear the topic for your presentation. You will have 4 minutes to prepare your presentation. Then you will have 2 minutes to record your presentation. Your presentation should be as full as possible.

You will now begin this part.

2008 AP® JAPANESE LANGUAGE AND CULTURE FREE-RESPONSE QUESTIONS

AP Japanese Language & Culture - Speaking



Question 11 of 11

Directions: Imagine that you are making an oral presentation to your Japanese class. First, you will read and hear the topic for your presentation. You will have 4 minutes to prepare your presentation. Then you will have 2 minutes to record your presentation. Your presentation should be as full as possible.

Present your own view or perspective on Japanese pop culture. Discuss at least FIVE aspects or examples of Japanese pop culture.

Begin with an appropriate introduction, give details, explain your own view or perspective, and end with a concluding remark.

Preparation Time: 240 Seconds
Response Time: 120 Seconds

PREPARATION TIME

00 : 04 : 00

2008 AP® JAPANESE LANGUAGE AND CULTURE FREE-RESPONSE QUESTIONS

The following text is the recording script for the audio portion of the task shown in the previous screen image. Students heard this audio during the exam administration, but this text does not appear in the exam and is provided here for reference only.

Speaking Question 11 of 11

N: Present your own view or perspective on Japanese pop culture. Discuss at least FIVE aspects or examples of Japanese pop culture.

Begin with an appropriate introduction, give details, explain your own view or perspective, and end with a concluding remark.

N: You have four minutes to prepare your presentation.

(240 seconds)

N: You have two minutes to record your presentation.

[TONE]

(120 seconds)