



## **AP<sup>®</sup> Music Theory: Sight Singing 2006 Scoring Guidelines**

### **The College Board: Connecting Students to College Success**

The College Board is a not-for-profit membership association whose mission is to connect students to college success and opportunity. Founded in 1900, the association is composed of more than 5,000 schools, colleges, universities, and other educational organizations. Each year, the College Board serves seven million students and their parents, 23,000 high schools, and 3,500 colleges through major programs and services in college admissions, guidance, assessment, financial aid, enrollment, and teaching and learning. Among its best-known programs are the SAT<sup>®</sup>, the PSAT/NMSQT<sup>®</sup>, and the Advanced Placement Program<sup>®</sup> (AP<sup>®</sup>). The College Board is committed to the principles of excellence and equity, and that commitment is embodied in all of its programs, services, activities, and concerns.

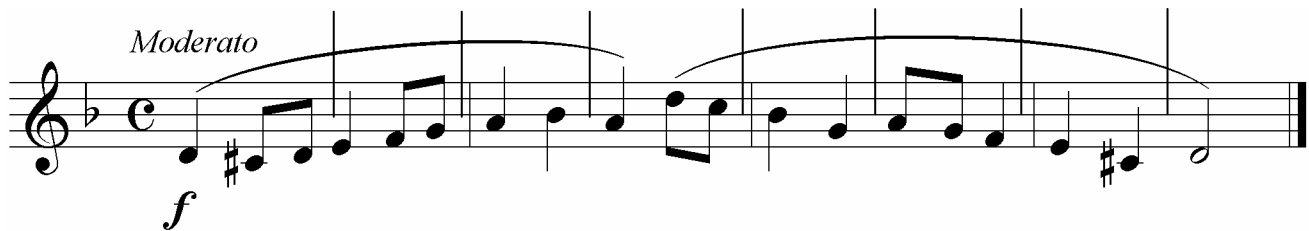
© 2006 The College Board. All rights reserved. College Board, AP Central, APCD, Advanced Placement Program, AP, AP Vertical Teams, Pre-AP, SAT, and the acorn logo are registered trademarks of the College Board. Admitted Class Evaluation Service, CollegeEd, connect to college success, MyRoad, SAT Professional Development, SAT Readiness Program, and Setting the Cornerstones are trademarks owned by the College Board. PSAT/NMSQT is a registered trademark of the College Board and National Merit Scholarship Corporation. All other products and services may be trademarks of their respective owners. Permission to use copyrighted College Board materials may be requested online at: [www.collegeboard.com/inquiry/cbpermit.html](http://www.collegeboard.com/inquiry/cbpermit.html).

**Visit the College Board on the Web: [www.collegeboard.com](http://www.collegeboard.com).**

**AP Central is the official online home for the AP Program: [apcentral.collegeboard.com](http://apcentral.collegeboard.com).**

AP<sup>®</sup> MUSIC THEORY (SIGHT-SINGING)  
2006 SCORING GUIDELINES

Question S1



**SCORING: 9 points**

Use EITHER the regular scoring guide OR one of the alternate scoring guides, whichever gives the highest score.

**I. Regular Scoring Guide**

- Score 1 for each segment (i.e., each half-measure) correct in pitch, rhythm, and tempo (0–8).
- If at least one segment is correct using I.A., score 1 point for responses that have no hesitations or restarts (=overall flow; the “flow” point).
- Record any score of 4 or higher and move to the next tape.
- If the score is less than 4, try an alternate scoring guide.

**II. Alternate Scoring Guides** (NB: Do *NOT* award the “flow” point in the alternate scoring guide.)

- If a student sings many of the pitches correctly but is consistently inaccurate in rhythm, you may determine holistically to award up to 4 points for pitch.

**OR**

- If a student is accurate or nearly accurate with respect to rhythm but is consistently inaccurate in pitches, you may determine holistically to award up to 2 points for rhythm.

**III. Other Scores with Special Meanings**

**1** This score may be given for responses that have some redeeming qualities (e.g., retention of the tonic pitch and singing the melody with a correct contour. Persistence alone is *not* a redeeming quality.)

**0** This score is for responses that have no redeeming qualities (or only one) but demonstrate an attempt to sing.

— This designation is reserved for totally irrelevant responses and blank tapes.

**IV. NOTES**

- If a student restarts, score the last *complete* response but do *not* award the “flow” point.
- Grade from the tonic established by the student. However, credit any correctly transposed segment approached by the correct interval. In other words, *any segment entered correctly (by the correct interval) is eligible for the point.*
- If the student changes tempo and continues in the new tempo, do not credit the segment where the change occurs but credit the ensuing segments.
- The last note must be held at least to the attack of the fourth beat for that segment to receive credit.

**AP<sup>®</sup> MUSIC THEORY (SIGHT-SINGING)  
2006 SCORING GUIDELINES**

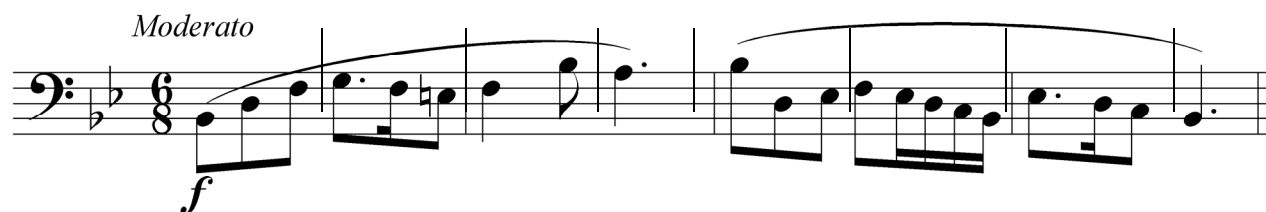
**Question S1 (continued)**

- E. Ignore the incorrect use of syllables, letter names, or numbers as well as expletives, giggles, and the like.
- F. Refer any problem tapes to the question leader (e.g., incompletely recorded tapes, tapes that play back at the wrong speed, tapes that might indicate security violations such as the use of a piano, coaching, or other students singing in the background, etc.).
- G. If you try both regular and alternate guides, record the higher of the scores.
- H. Scores from one guide may *not* be combined with those of another.
- I. Listen beyond the end of the performance to ensure that the student made no additional response.

AP<sup>®</sup> MUSIC THEORY (SIGHT-SINGING)  
2006 SCORING GUIDELINES

Question S2

*Moderato*



**SCORING: 9 points**

Use EITHER the regular scoring guide OR one of the alternate scoring guides, whichever gives the highest score.

**I. Regular Scoring Guide**

- A. Score 1 for each segment (i.e., each half-measure) correct in pitch, rhythm, and tempo (0–8).
- B. If at least one segment is correct using I.A., score 1 point for responses that have no hesitations or restarts (=overall flow; the “flow” point).
- C. Record any score of 4 or higher and move to the next tape.
- D. If the score is less than 4, try an alternate scoring guide.

**II. Alternate Scoring Guides** (NB: Do *NOT* award the “flow” point in the alternate scoring guide.)

- A. If a student sings many of the pitches correctly but is consistently inaccurate in rhythm, you may determine holistically to award up to 4 points for pitch.

**OR**

- B. If a student is accurate or nearly accurate with respect to rhythm but is consistently inaccurate in pitches, you may determine holistically to award up to 2 points for rhythm.

**III. Other Scores with Special Meanings**

**1** This score may be given for responses that have some redeeming qualities (e.g., retention of the tonic pitch and singing the melody with a correct contour. Persistence alone is *not* a redeeming quality.)

**0** This score is for responses that have no redeeming qualities (or only one) but demonstrate an attempt to sing.

— This designation is reserved for totally irrelevant responses and blank tapes.

**IV. NOTES**

- A. If a student restarts, score the last *complete* response but do *not* award the “flow” point.
- B. Grade from the tonic established by the student. However, credit any correctly transposed segment approached by the correct interval. In other words, *any segment entered correctly (by the correct interval) is eligible for the point.*
- C. If the student changes tempo and continues in the new tempo, do not credit the segment where the change occurs but credit the ensuing segments.
- D. The last note must be held at least to the attack of the third eighth note of that segment for that segment to receive credit.

© 2006 The College Board. All rights reserved.

Visit [apcentral.collegeboard.com](http://apcentral.collegeboard.com) (for AP professionals) and [www.collegeboard.com/apstudents](http://www.collegeboard.com/apstudents) (for students and parents).

**AP<sup>®</sup> MUSIC THEORY (SIGHT-SINGING)  
2006 SCORING GUIDELINES**

**Question S2 (continued)**

- E. Ignore the incorrect use of syllables, letter names, or numbers as well as expletives, giggles, and the like.
- F. Refer any problem tapes to the question leader (e.g., incompletely recorded tapes, tapes that play back at the wrong speed, tapes that might indicate security violations such as the use of a piano, coaching, or other students singing in the background, etc.).
- G. If you try both regular and alternate guides, record the higher of the scores.
- H. Scores from one guide may *not* be combined with those of another.
- I. Listen beyond the end of the performance to ensure that the student made no additional response.